

HomeDVR Centralized management software 2.0

Instruction for use

| | |
|---|----|
| Outline..... | 4 |
| Precautions..... | 4 |
| Architecture..... | 6 |
| Working Principle..... | 8 |
| System Requirements..... | 9 |
| DVR Master Control Software..... | 10 |
| Version Update..... | 11 |
| Product Installation..... | 11 |
| Product Uninstall..... | 13 |
| Basic Settings..... | 14 |
| Video Settings..... | 15 |
| Audio and Video Setting..... | 18 |
| PTZ Setting..... | 19 |
| Color Setting..... | 21 |
| Motion Detection..... | 22 |
| Private Masking..... | 23 |
| Firmware Upgrade..... | 25 |
| Storage Settings..... | 26 |
| System Settings..... | 27 |
| Network Settings..... | 28 |
| Log Settings..... | 29 |
| User Settings..... | 30 |
| Playback Software..... | 32 |
| Client Software..... | 34 |
| IE browser remote access..... | 38 |
| Preparatory Work..... | 38 |
| IE remote controls Features..... | 41 |
| List of Features..... | 42 |
| Remote PTZ Control..... | 43 |
| Mobile Remote Access..... | 47 |
| Compatibility List..... | 47 |
| Android Phone..... | 47 |
| Apple Phone..... | 48 |
| Frequently Asked Questions..... | 49 |
| Why run the software does not have a video screen after the installation is completed?..... | 49 |
| How to install the diever of 681X card on WIN7-64?..... | 49 |
| Why run the software without any error, but the main interface does not have a video screen?..... | 51 |
| How to solve the question of the main interface is not covering the entire | |

| | |
|--|----|
| display screen?..... | 51 |
| Why can not video after the disk is full?..... | 51 |
| Why use the E Netcom can not remotely?..... | 51 |
| How to implement port mapping by Router OS?..... | 52 |
| Why installed the software but can not used from June 1, 2012 ?..... | 57 |
| How to install monitoring software description on Windows 2003?..... | 57 |

Outline

Precautions

First of all, thank you for choosing our latest products. Before you use the monitor card, please carefully read the related issues involved in the specification, familiar with the hardware, the functions of the various parts of the software in order to user in order to ensure that the best features of the system you play. Otherwise, all of you peril.

This manual will show you the installation, operation, setting and the use of network exhaustively of Home-Wei centralized monitoring system. The supply voltage of the system host $220V \pm 10\%$, If the voltage instability or interfere with the occasion, made of high quality regulated power supply (UPS). To ensure a good working system to normal state, the system installation, disassembly video capture card, the host is completely de-energized state, otherwise the residual voltage on the motherboard will damage the capture card.

The system host work at room temperature ($-10 \pm 3^{\circ}\text{C} \sim 55 \pm 2^{\circ}\text{C}$), a cleaner environment, and maintain good ventilation state.

Belong to my company's proprietary products in the system software, without consent, do not copy, otherwise affect the stability of the machine takes no responsibility for, and will be investigated through the legal channels piracy responsibility.

Functions and parameters

Compression Method: H.264/MPEG 4;

Display Resolution: 1024×768、1280×1024、16:9 Widescreen、16:10 Widescreen;

Preview resolution (Adjustable): 704×576 (PAL) , 740×480 (NTSC) ; 352×288 (PAL) , 370×240 (NTSC) ;

Recording Resolution (WYSIWYG): 704×576 (PAL 制) , 740×480 (NTSC 制) ; 352×288 (PAL 制) , 370×240 (NTSC 制) ;

Stand-alone capacity to support 12 path D1、48 way CIF;

Supports single screen、4、6、9 10、13、16、25、36 Screen display, Can be full screen, Supports automatic;

Page up;

Multi-screen real-time display/videoing/Playback function, Support multi-protocol PTZ control, Support a variety of alarm box linkage alarm;

Manual recording, continuous recording, timer recording, dynamic videos, event videos, linkage alarm video and other video way;

Display name can be set for each channel;

NTSC/PAL Two video display standard optional, 25 Frames / sec real-time preview、Recording, playback;

Video image attribute adjustment function to make the image clearer.

There are several classes of video image quality adjustable to change the size of the storage file to facilitate the application of different occasions.

Video motion alarm recording function, pre-recording time, delay recording time, adjustable support sound Alarm output.

The smart retrieval, according to the camera lens, the year / month / day / time period or long continuous search playback automatically retrieve alarm recording, Able to distinguish between video events.

With local amplification, frame-by-frame playback, fast playback, slow playback, normal playback.

Playback image capture function, playback file backup, file clip function.

Remote monitoring, remote control PTZ, color, manual recording, arm and disarm, restart the computer and other control efforts.

Support the current maximum capacity of hard disk, and supports the installation of multiple large-capacity hard disk.

The hard management by adequate and reasonable use enables the drive to get the maximum use of minimum reserve space of the hard disk and hard disk settings.

Automatically creates a log file (user operation log, system log, remote control log), to facilitate the query operation records.

System can be arbitrarily set the timing shutdown, scheduled reboot function, to ensure that the system is running high stability.

Can be set to boot automatically run the monitoring software to automatically turn off power program calls automatically restart, and automatically restore the video.

Hardware, software, After strict test, reliable.

The system hardware configuration requirements, 48 video shows the CPU

occupancy rate of less than 75%.

The system can effectively prevent repeated operation monitoring system to cause the system to crash.

The digital surveillance system product features:

The modular design of the monitoring system, independent of each other between each module to improve the stability and scalability of the system, to ensure the system's long-running. The system can easily add peripheral hardware: video capture devices, alarm devices, matrix, fast ball and does not affect the stability of the whole system of running.

<User-friendly interface for easy operation>

1. Automatically support a variety of mainstream display resolution, user-friendly choice.
2. Users can arbitrarily set the number of preview screen and screen layout provides screen switching cycle switch function, set the single cycle switch and multiplexer cycle.
3. Support an unlimited number of video preview and compression, the type of processor and memory capacity to.
4. The humane system information display window, easy for users to understand the operation of the system state.
5. Support user management with automatic / manual lock function, support the local user and network user rights settings.
6. The quality of the image is clear: the stream, frame rate, screen size, and can be freely adjusted in order to achieve maximum flexibility.
7. Intelligent video control, automatically adjust the video frame rate and video quality based on the different times of the day.
8. Video fast and convenient way to switch to select video storage settings.
9. Users can customize the disk storage and liquidation strategy.
10. Users can quickly copy the settings for a channel to the other channel, without having to individually set.
11. The system can be complicated to perform a variety of tasks (monitoring, recording, playback, control, backup, etc).

Architecture

<Server-side>

The server program (host program) is the core of the data acquisition, information management, automatic control and network management of the monitoring system as a whole. The host program real-time audio and video capture and preview pre-listening frequency, according to video recording schedule is set automatically to the real-time collection of audio and video data compression and

storage of high-definition, and the client requesting a connection to the network real-time transmission. In addition, the system response to the probe signal, and can control the front-end PTZ Speed Dome and other recording system operation and in accordance with the relevant set to run automatically. At the same time according to the client, IE control remote settings, retrieval and control of the server program to achieve its remote function.

<Client>

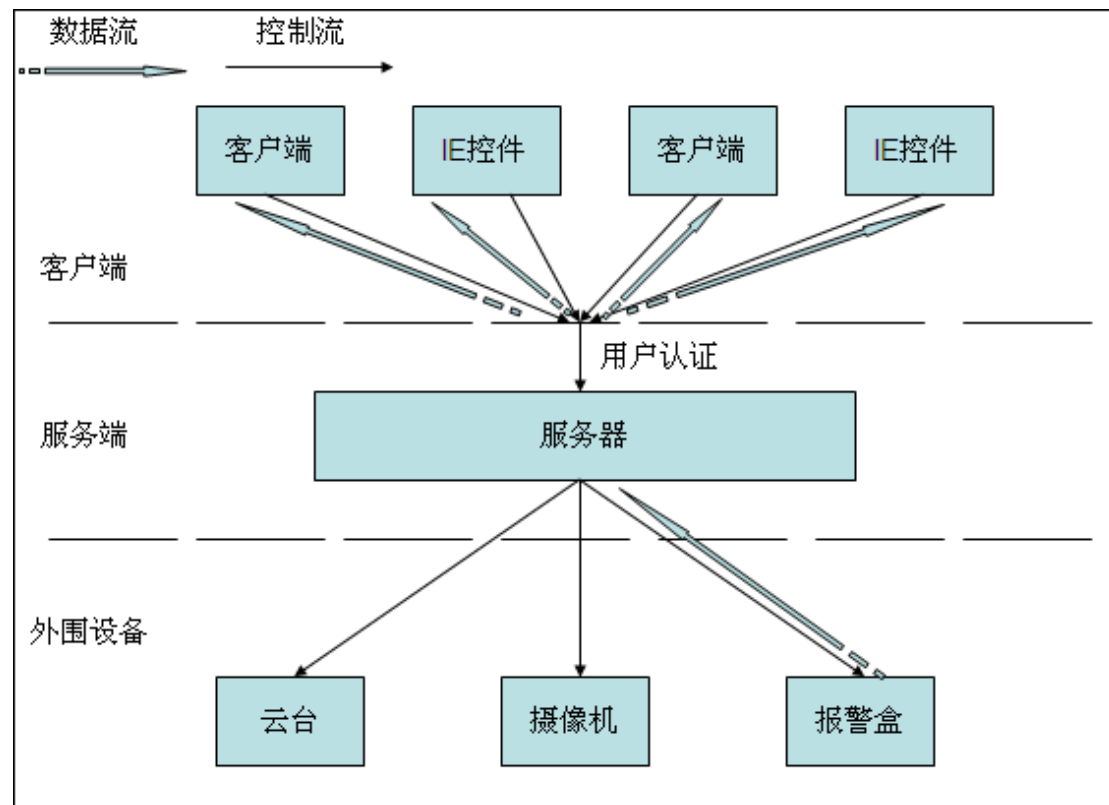
The software in order to achieve large-scale centralized monitoring, special server-side and client incorporated into a system which can be realized when customers need remote monitoring software, install the server-side .

<IE controls>

IE controls and the client has the same function, and the difference is that the control operation by the browser.

Working Principle

After the product is installed on your computer, run. Through the "server", "client", "IE Controls three systems work together to achieve video images, alarm signal processing, transmission, manual and automatic control of peripheral devices. As shown below:



System Requirements

Hardware requirements:

4-way card, 8 cards can be combined into any video surveillance system, depending on the number of PCI slots in your motherboard and your CPU processing power.

Video capture card Recommended configuration table.

| | 4 way | 8 way | 9-16 way | 17-32 way |
|--------|---|-------------------------|-------------------------|-------------------------|
| CPU | CeleronE1600 Or more | CeleronE2140 Or more | CeleronE4300 Or more | CeleronE5200 Or more |
| Memory | 256M | 512M | 512M | 512M Or more |
| | Motherboard Intel G31/G35 Above chipset | | | |

IP Camera:

| | 4-8 way | 9-16 way | 16-32 way | 17-32 way |
|--------|-------------------------------------|---------------|-------------------------|-----------------|
| CPU | E3200 Or more | E7400 Or more | Core i5 Or more | Core i7 Or more |
| Memory | 512M | 1024M | 2048M | 2048M |
| | Motherboard Intel G41 Above chipset | | Intel H61 Above chipset | |

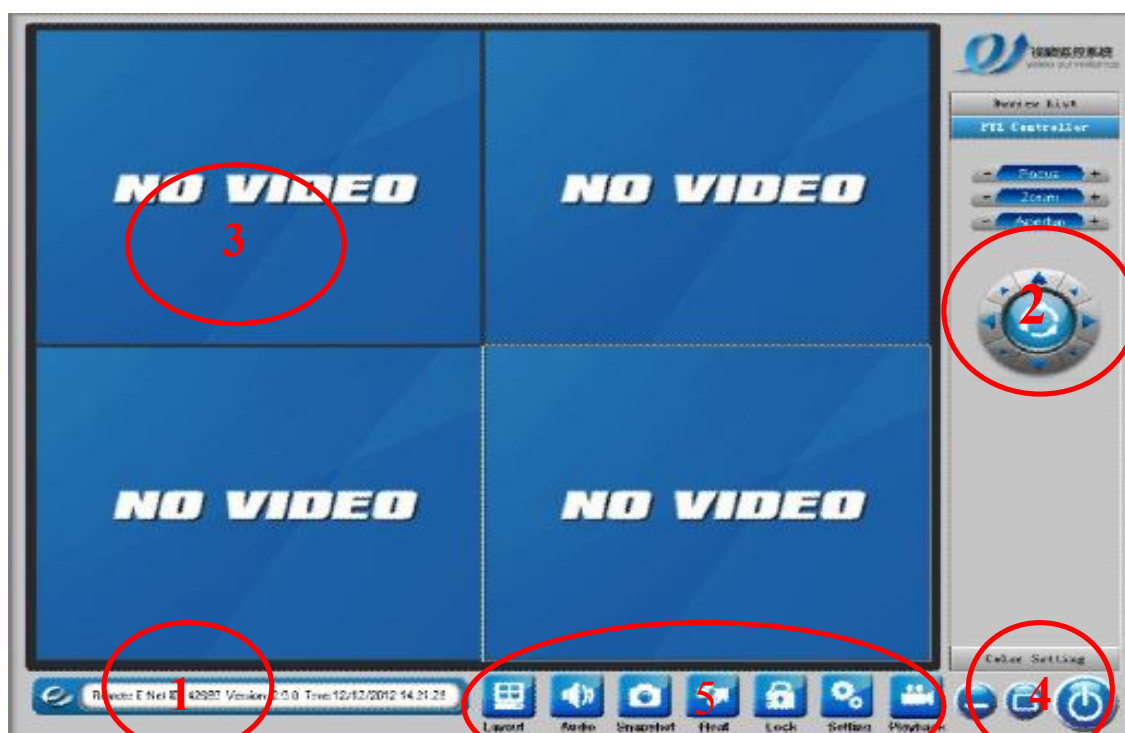
Software Requirements:

Operating system: Apply to Windows 2000/Windows XP/Windows Vista

- 1、System recommended to use System of Microsoft Windows XP Professional sp3.
- 2、install DirectX9.0c Or more.
- 3、Need to use the latest graphics card driver.
- 4、DVR software is installed on the host, do not install a firewall, antivirus software and other applications;(Install a firewall system firewall, remote access connection failure; installed anti-virus software, run-time, will take up a lot of system resources, it will affect the stability of the DVR software; the DVR software runs, do not run other applications.)

Note: install the graphics driver, be sure to install the motherboard driver, otherwise it is not conducive to the graphics card and DVR work properly.

DVR Master Control Software



Interface Description

| | |
|-----------------------------|--|
| ① system information window | User information, time information etc |
| ② PTZ control panel | Operation PTZ: up and down, automatic line scan, zoom, etc |
| ③ playback window | Display video and window control |
| ④ system button | Minimize, maximize, exit |
| ⑤ interface control button | Split-screen-mode select, sound, photographs, suspended, locked, system settings, playback |

Version Update

1. The unified installation interface, the installation program is more convenient
2. New Client, so that the client and host side separation

Product Installation

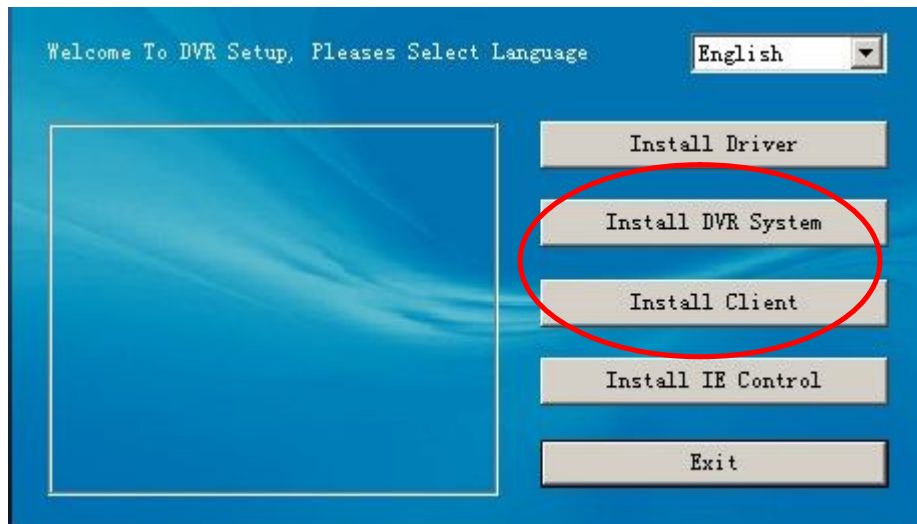
The installation procedure is as follows

1. Turn off the computer
2. Open the case
3. One or more blocks of the video card firmly insertion groove and tighten the screws
4. Cover chassis
5. Turn on the computer 错误！未找到引用源。
6. Connect the video cable

Software Installation

Note: If your DVR computer video capture other compression card, be sure they relieved and completely delete avoid similar hardware and software conflicts

1. Video capture and compression card into the computer slot and boot into the operating system.
2. Boot into the operating system, the system will automatically discover the new hardware and prompts you to install the driver, at the moment, you can manually install the driver, but it is recommended that you do not want to manually install, while the use with the card CD installation software installation.
3. DVR installation disc into your CD-ROM drive CD-ROM, double-click setup.exe to install the software interface, as shown below:



4. Install capture card driver

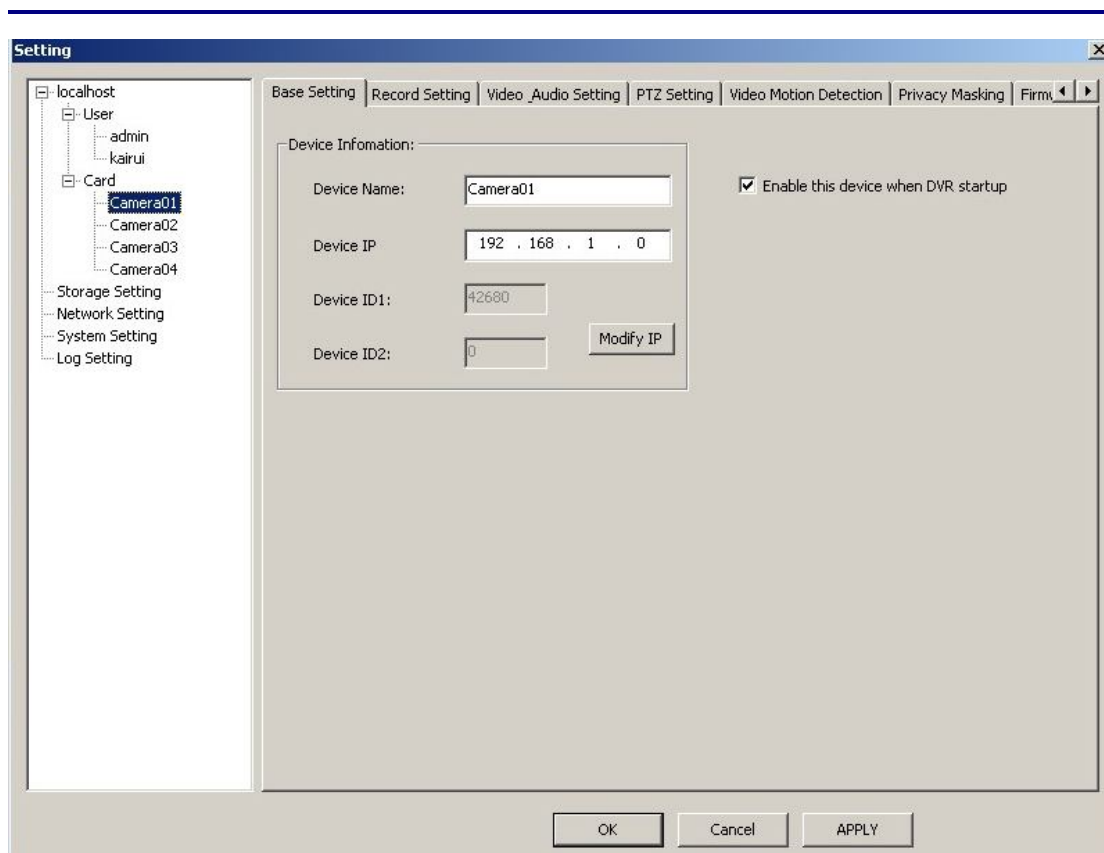
- ①. Click install capture card driver
- ②. Click to install digital monitoring system (if your card for the 2815 or 9611 or USB will pop up another dialog and click Next to continue to see only).

Product Uninstall

Mouse to select: "Start" -> "Programs"-> "HomeDVR" -> "Uninstall HomeDVR"

You can uninstall the digital monitoring software. Uninstall the software will delete the related files, video files and video files but does not delete the folder.

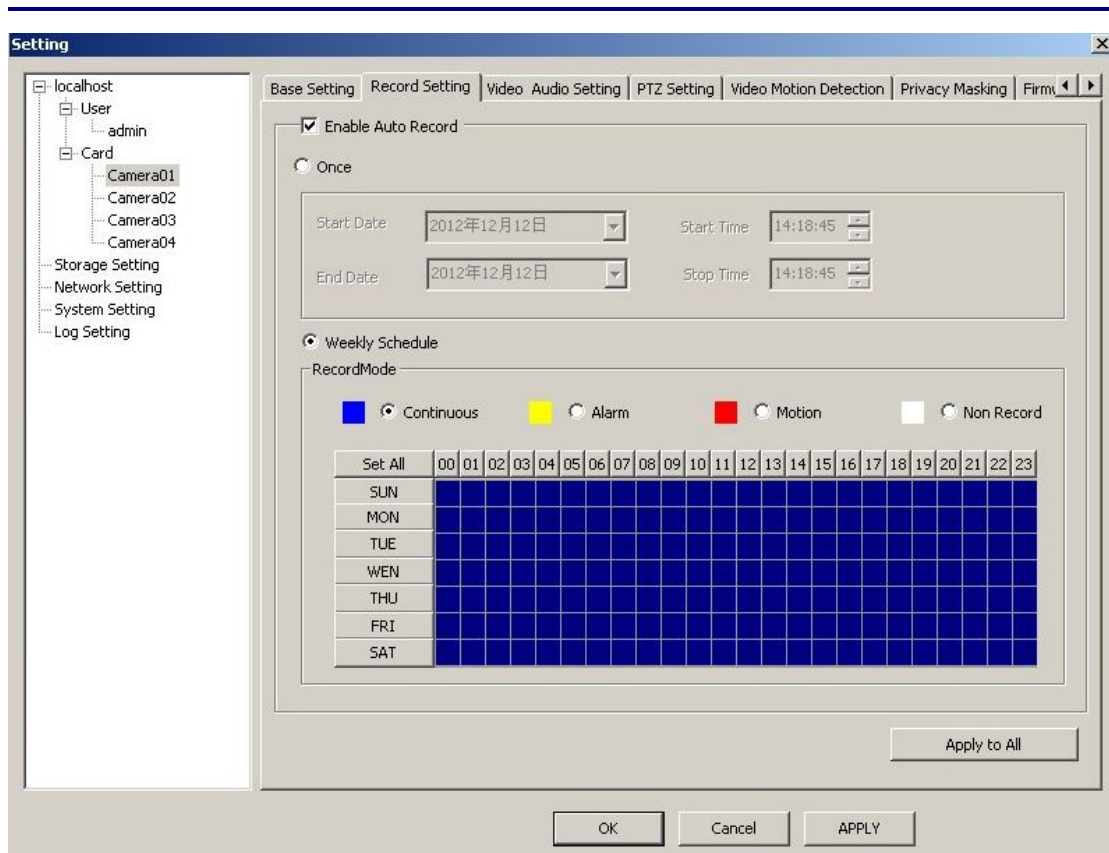
Basic Settings



Capture card basic set page interface description:

1、camera name can be modified for specific names, such as the lobby, the entrance, setting a new name and click the Modify button to save. Can clearly shows which cameras monitor where.the camera's IP address, not a network camera IP address. If checked <the software starts automatically open the device> click Apply> button to apply the settings, start the software will automatically start the camera monitoring.

Video Settings



The monitoring system provides both manual recording and automatic video recording mode.

1. manual recording

Select manual recording, the system will stop the automatic recording control, users can channel control panel of the main interface for manual recording control. (Right-you want to control the camera)

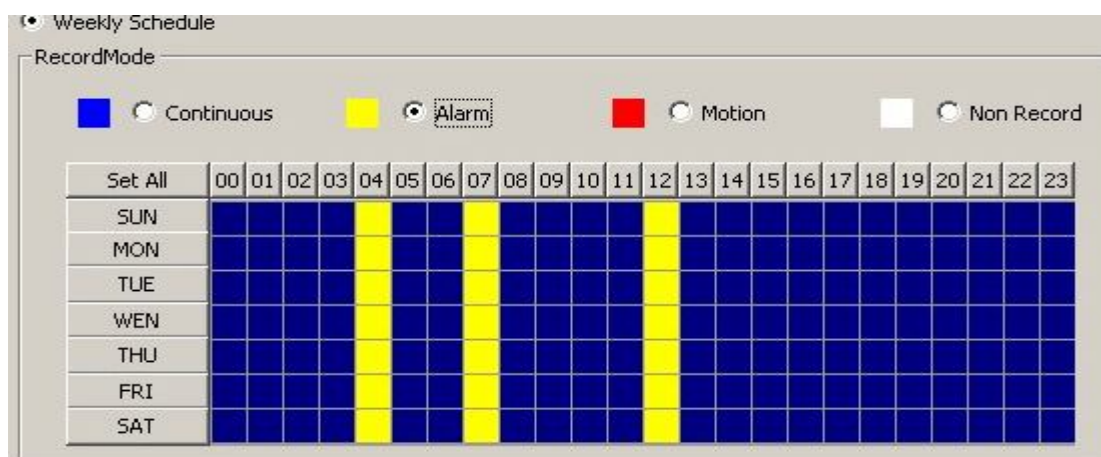


2. Activate automatic recording

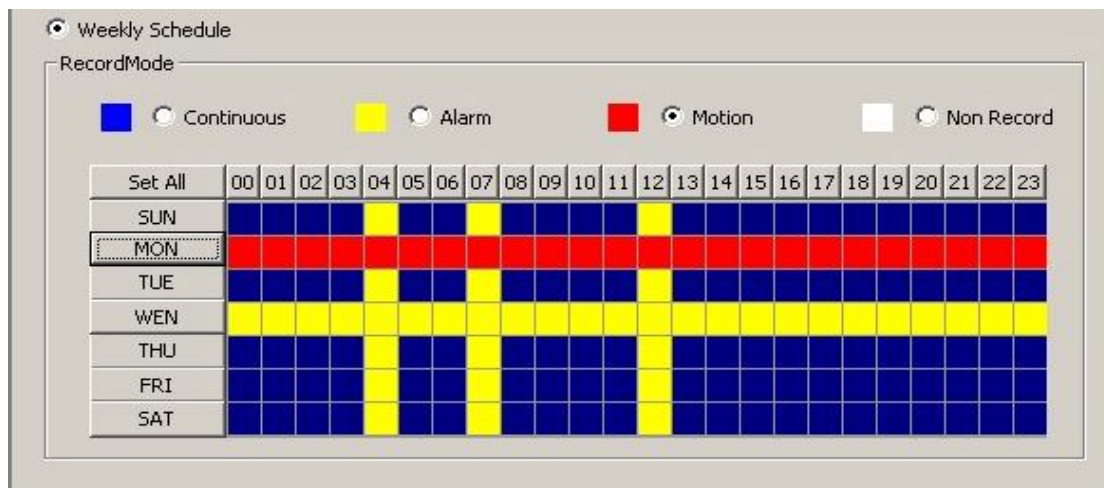
Users can set daily video according to their needs, so that the system automatically video control.

- a. Disposable: Select to start recording, and the end of the recording time.
- b. Week recoding plan: There are four video types video settings: Continuous recording, alarm recording, motion detection recording, prohibit video add a week recoding plan we should choice the type of recording, Have four options:

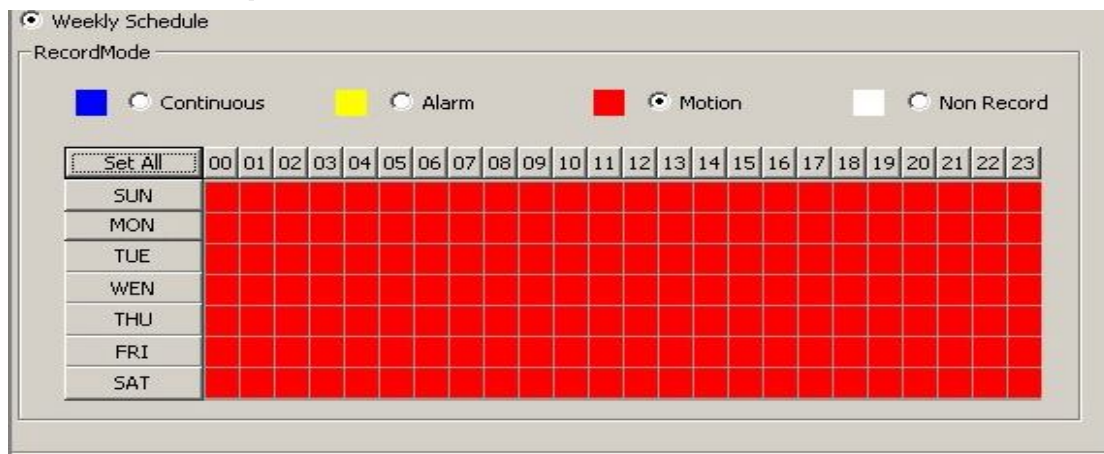
①Hour selection method: In the hours grid ("00", "01", "02", corresponding to the daily hours), and click the left mouse button, will this week the hours of a day are set to the selected video type:



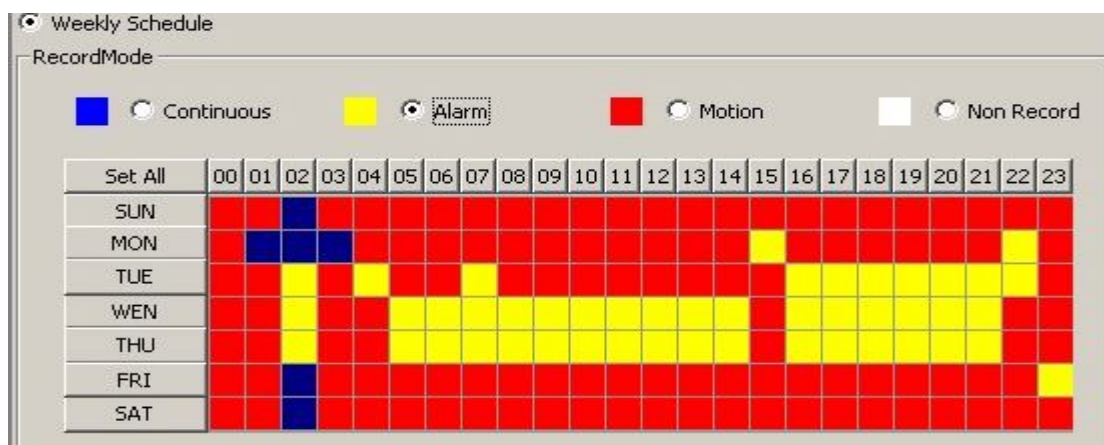
The week selection method: date grid, click the left mouse button, will this week, all hours of the day set for the selected video type:



set all the way: click on "Settings All" will be a week schedule are set to the selected video type:



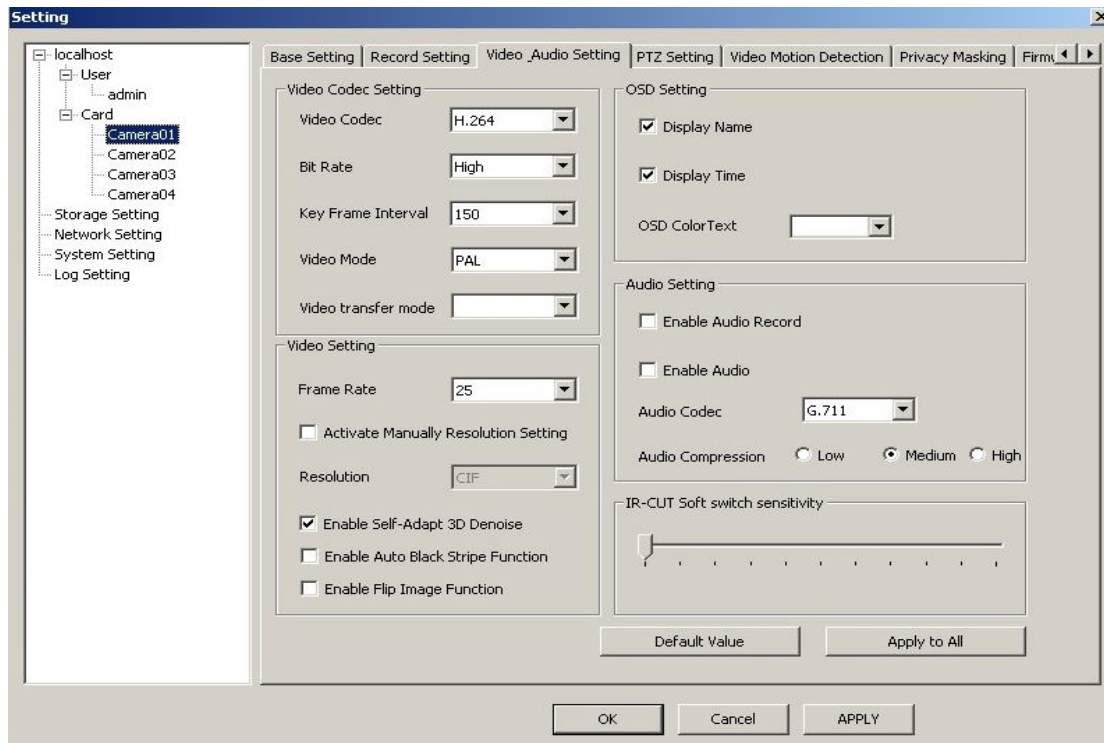
④Chosen at random: schedule grid area, left-click or hold down the left button drag to the the checkered corresponding hours set for the selected video type:



all devices with this set

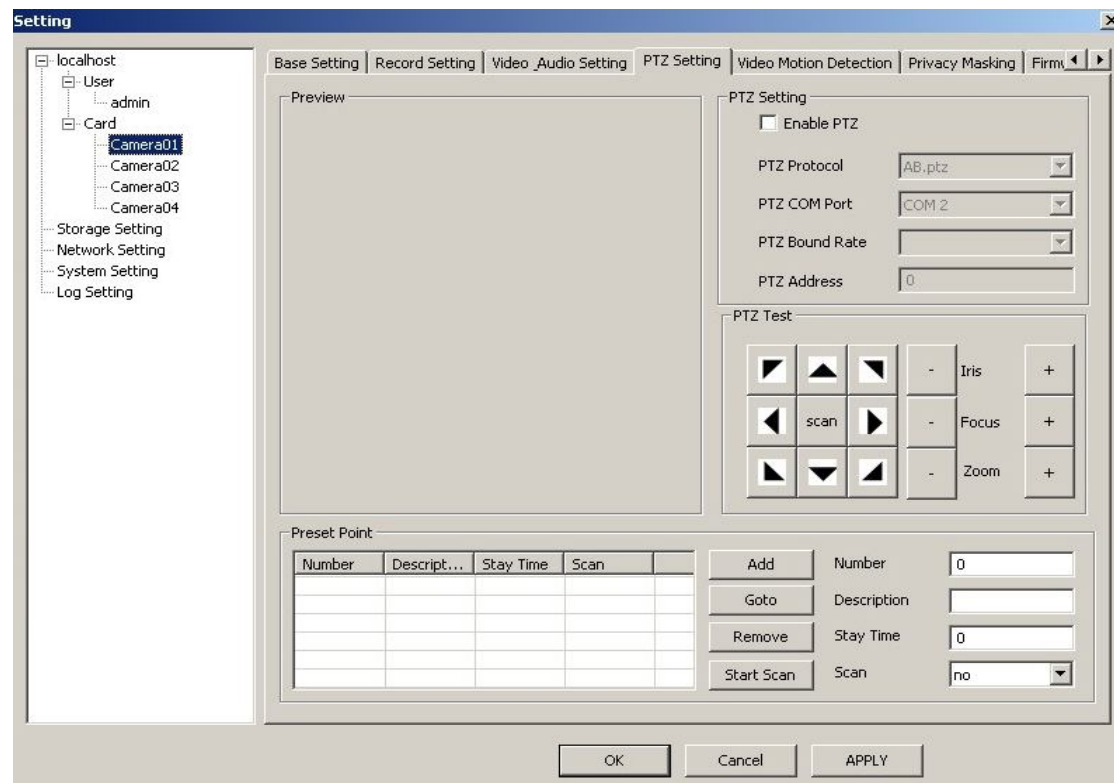
Click <all equipment with this setting> button, then all capture cards, network cameras will be applied for the same video settings.

Audio and Video Setting



- ① video compression: Recommended use H.264
- ② bitrate: VBR representative variable stream, CBR represents a constant stream, it is recommended to use VBR, so the picture motion less, can automatically reduce the large number of streams, save your hard disk space
- ③ Audio compression: G.711 and speex two ways, it is recommended to use speex
- ④ whether to automatically adapt to the 3D noise reduction: It is strongly recommended by the hook on this feature, you will further reduce the bit rate, saving your hard disk to improve your screen, reduce your consumption of resources
- ⑤ frame rate: the smaller the frame rate setting range of 0-25, the frame rate is set, the smaller the image screen delay, recommended 25.
- ⑥ Resolution: general CIF, so that under normal circumstances in real time watch 16 video, if you use the D1, will reduce your real-time preview speed
- ⑦ go yellow edge:
- ⑧ image: You can control the image 180 ° flip flip
- ⑨ Audio Settings: You can choose whether to activate the audio recording
- ⑩ default settings: If you set a parameter error, click Use Default Settings> button to revert to the original parameter settings, click Apply button, the application set.
- ⑩ all set with this setting: Click this button, all capture cards and network cameras all apply this parameter is set.

PTZ Setting



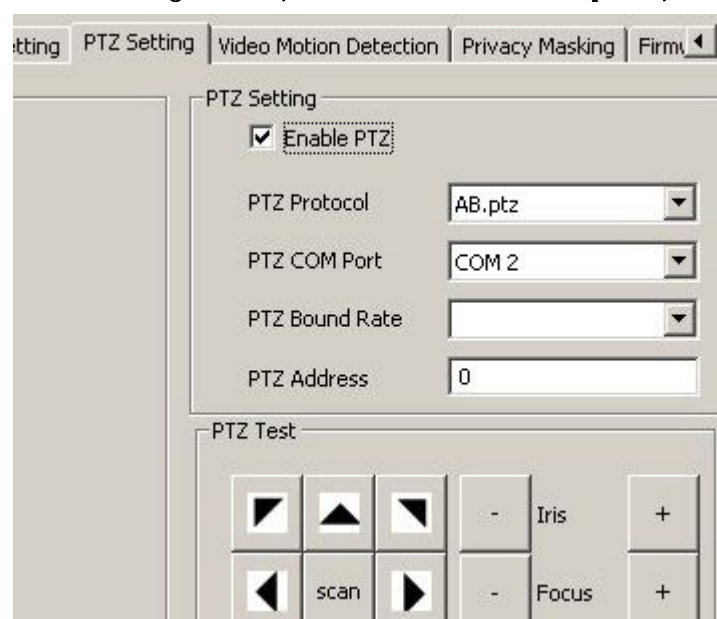
PTZ protocol: a total of 56 kinds of agreements, he supported the agreement contains the following 55 kinds

| | | | | | | | |
|----------------------------|--------------------|-----------------|---------------------|---|---------------------|-------------------------|--------------------|
| AB | ABK2001 | ACES-H N | 艾立克 -SAE | 明景-B01 | 明景 -B01 (球 机) | DRAGON | EE |
| GRX-20 00 | HT600 | HY | JD | Kallaite_ Integrati on_ball_m achine | M800CI (K ONY) | MTR500 (K ONY) | TM-CIA (K ONY) |
| New_De coder (新 解码器) | PE5051K | PELOC-D (红军) | PELOC-D (非 标准 1) | PELOC-D (非 标准 2) | PELOC-D (非 标准 3) | PELOC-D (非 标准 4) | PELOC-D (AB) |
| PELOC-D (嘉杰) | PELOC-D (正通) | PELOC-P | PELOC-P (非 标准) | PELOC-P (海 硕) | PELOC-P (明 景) | PELOC-P (Panasoni c) | PELOC-P (维多) |
| PIH-10 16 (利) | PIH-FAS TDOME (| SAMSUN G-641 | SE300-SH ARPEYES | SE600-HY | SE600-PE LCOD | SE600S1-HY | SE600S1- PELCOD |

| | | | | | | | |
|---------------------------|-------------------------|-----------|--------------------|----------|-------------|---------------|--------|
| 凌) | 利凌) | | | | | | |
| SE600S 1-SHAR PEYES | SE600-S HARPEYE S | SONET | EVI-D100 (Sony) | SPR9060 | SYYT | Tcstd-Y1 0 | Visdom |
| W110-P TZ | 亚安(1) | 亚安 (2) | YCWE | 银信 V1064 | 银信 V1200 | 尤利 (YLDVR) | |

The other PTZ settings based on your hardware configuration information to configure

After configuration, select the Use PTZ option, click Apply to.



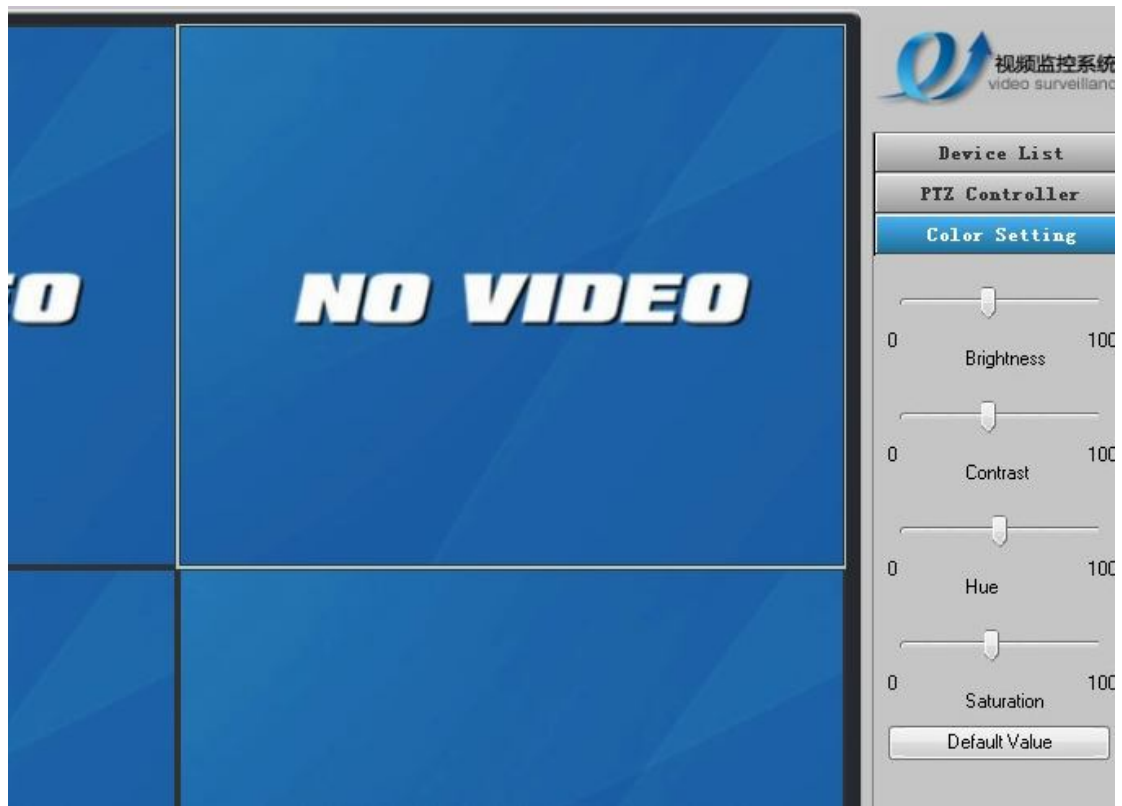
The image shows a software configuration window with several tabs: 'Setting', 'PTZ Setting', 'Video Motion Detection', 'Privacy Masking', and 'Firmware'. The 'PTZ Setting' tab is active. Inside this tab, there is a section titled 'PTZ Setting' containing the following options:

- ☒ Enable PTZ
- PTZ Protocol: AB.ptz (dropdown menu)
- PTZ COM Port: COM 2 (dropdown menu)
- PTZ Bound Rate: (empty dropdown menu)
- PTZ Address: 0 (text input field)

Below the 'PTZ Setting' section is a 'PTZ Test' section with a grid of control buttons:

- Top row: Left arrow, Up arrow, Right arrow, a '-' button, 'Iris', and a '+' button.
- Bottom row: Left arrow, 'scan', Right arrow, a '-' button, 'Focus', and a '+' button.

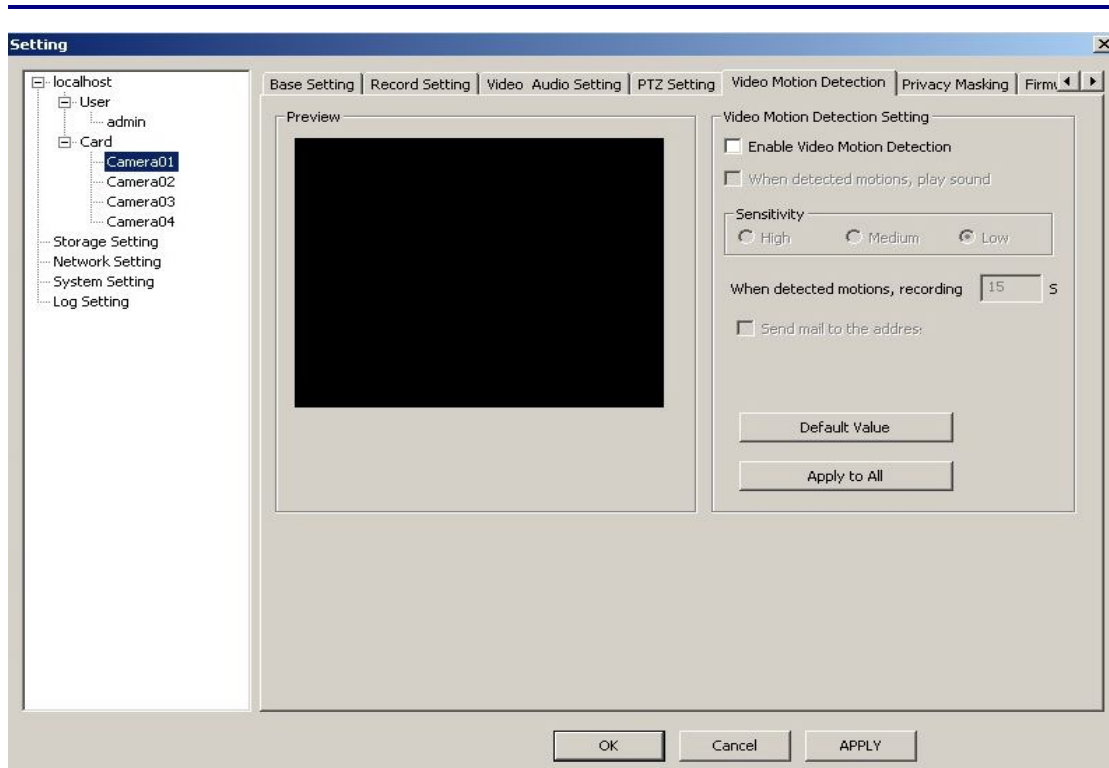
Color Setting



Page Description:

Drag the brightness, color, contrast, saturation button in the video preview window on the left you can see the effect of the set, adjusted to the best effect. Not debug to the desired results, you can click using the default settings, the program default settings.

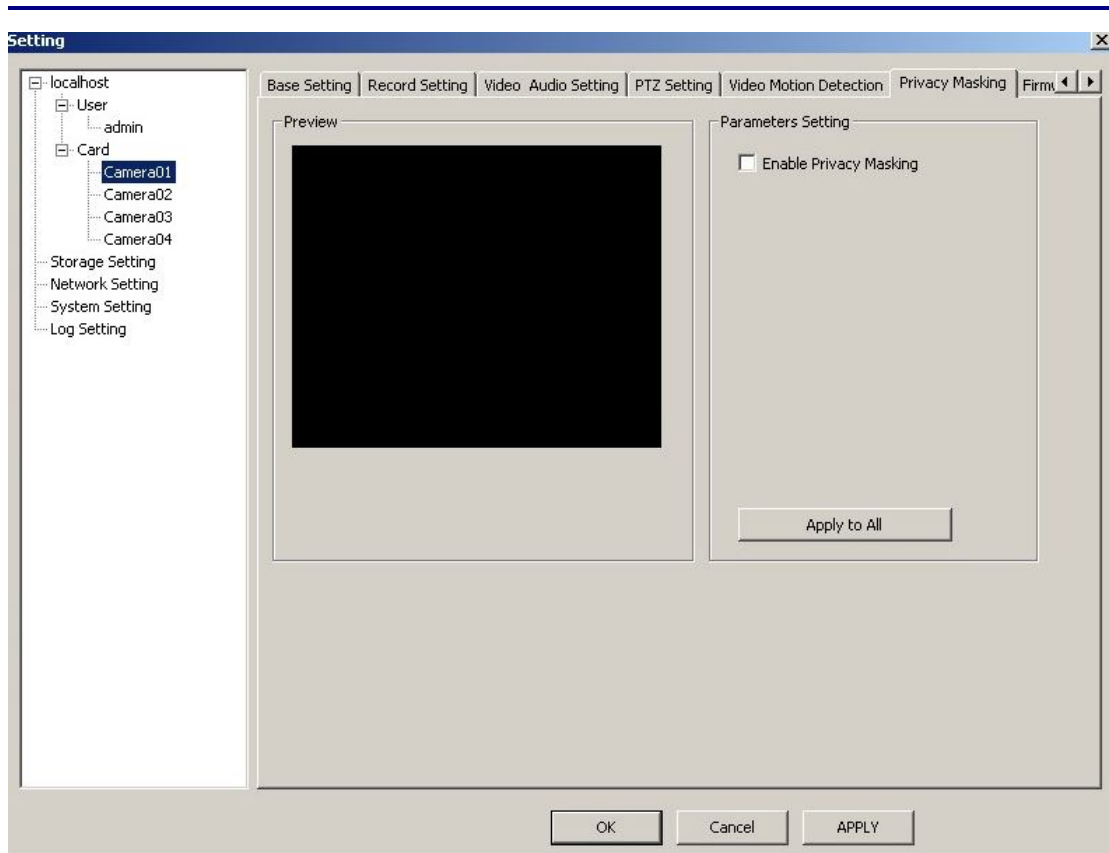
Motion Detection



Page Description:

Commonly used in unmanned video surveillance and automatic alarm. By the camera will be in accordance with the image of the different frame rate acquisition by the CPU according to a certain algorithm calculation and comparison, when the screen changes, if any, people have gone through, the lens is moved, the calculation results of the comparison show that the number will exceed the threshold and instruct the system can automatically make the appropriate treatment Enable motion detection will automatically start your video motion detection system, means that your screen will activate the recording moving objects, high sensitivity represents a very small size changes, such as leaves, movement will activate the motion detection, and sensitivity on behalf of only the larger movement of objects in order to activate the recording.

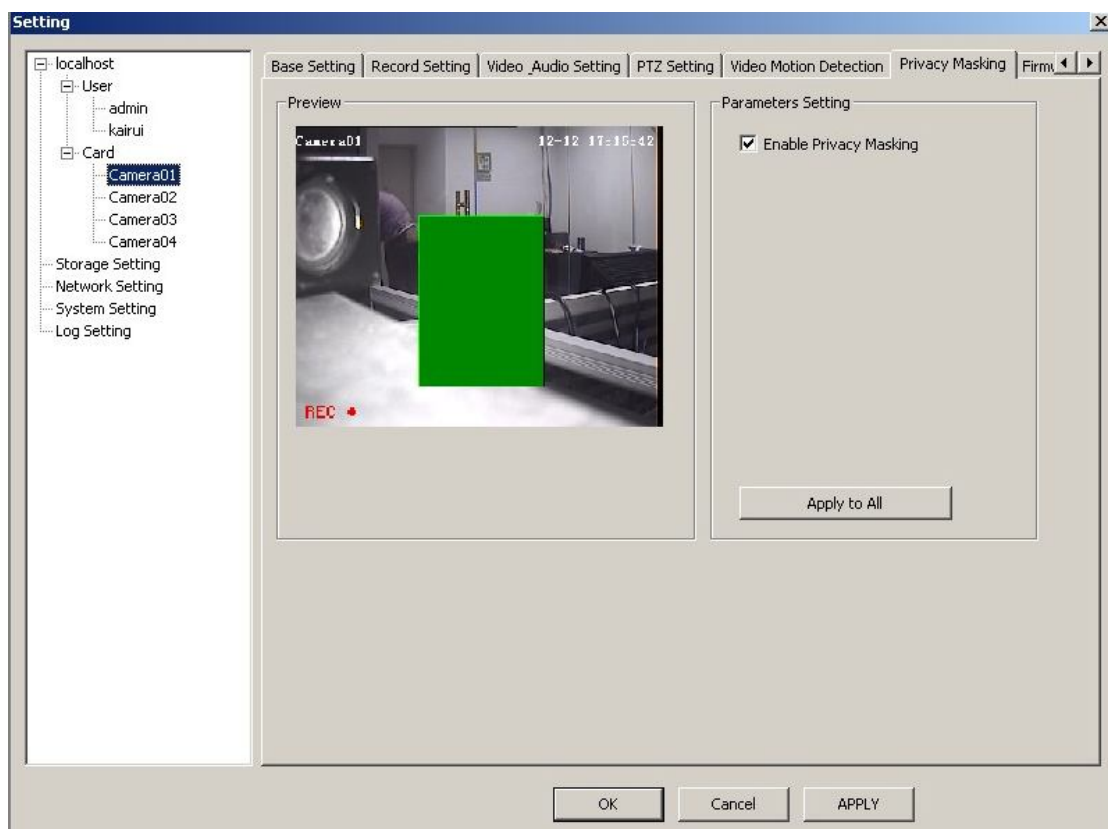
Private Masking



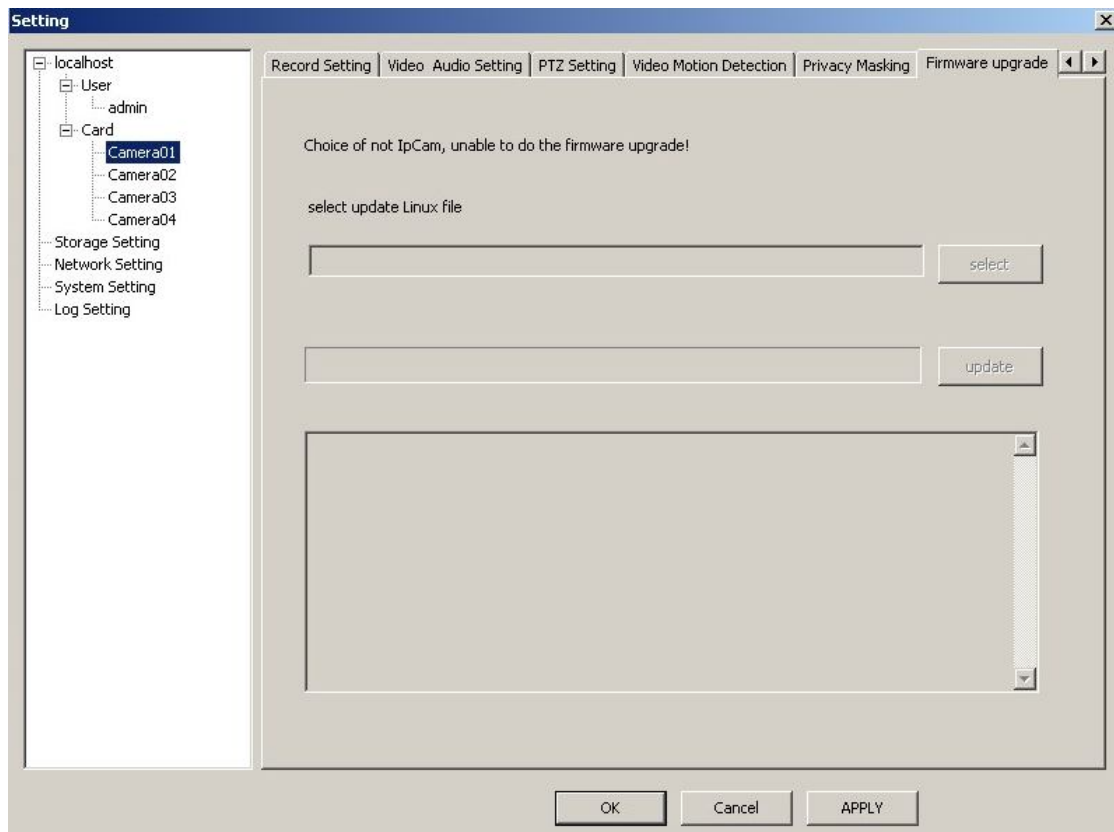
Page Description:

Block the function, also known as regional protection function can be set at the same time more than one monitor protected area, the camera can monitor bypass the protection block. To protect people's private information to be monitored in some special occasions, very necessary.

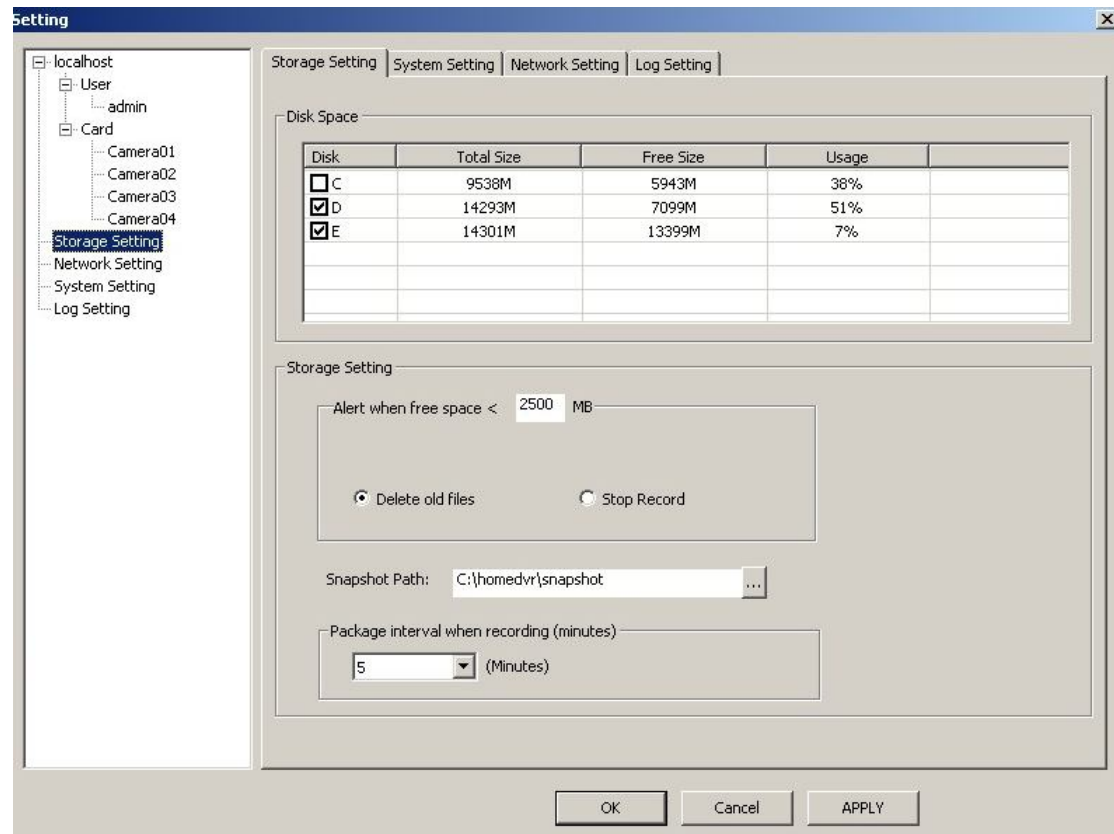
Usage: Hold down the left mouse button, drag the mouse to the place you want to block the cover, release the left-click and click Apply to activate the private shelter.



Firmware Upgrade



Storage Settings



① hard disk:

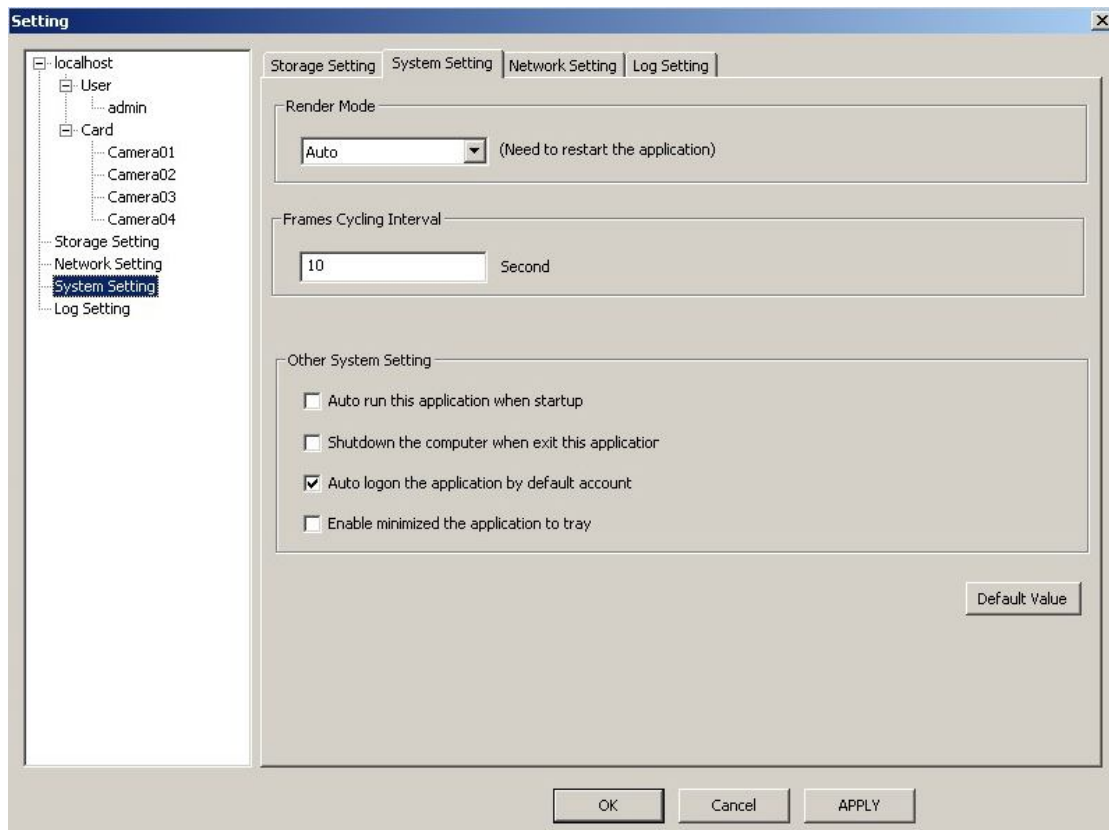
Select the left of the tree control global settings, network settings, system settings, storage settings into the settings page system supports hard loop recording, needed to store video disk serial number on the hook, if you hook a few disk serial number, then the DVR system will store a serial number, automatically went to the next disk video storage disk, when the first disk is full.

② memory settings:

you can set when the disk storage space is less than 200MB, the user can set the size of this space, the appropriate size can be set according to the number of camera station, it is recommended to set 2048MB. The target size when all the selected disk space remaining space at the moment, the DVR system will be based on the user settings to delete old files or stop recording, make the appropriate operation and video files stored in the disk root directory folder.

Frame grabbing: grab a video frame to save it as a static picture (or screen shot), save the default path HomeDVR \ snapshot, users can also freely set.

System Settings



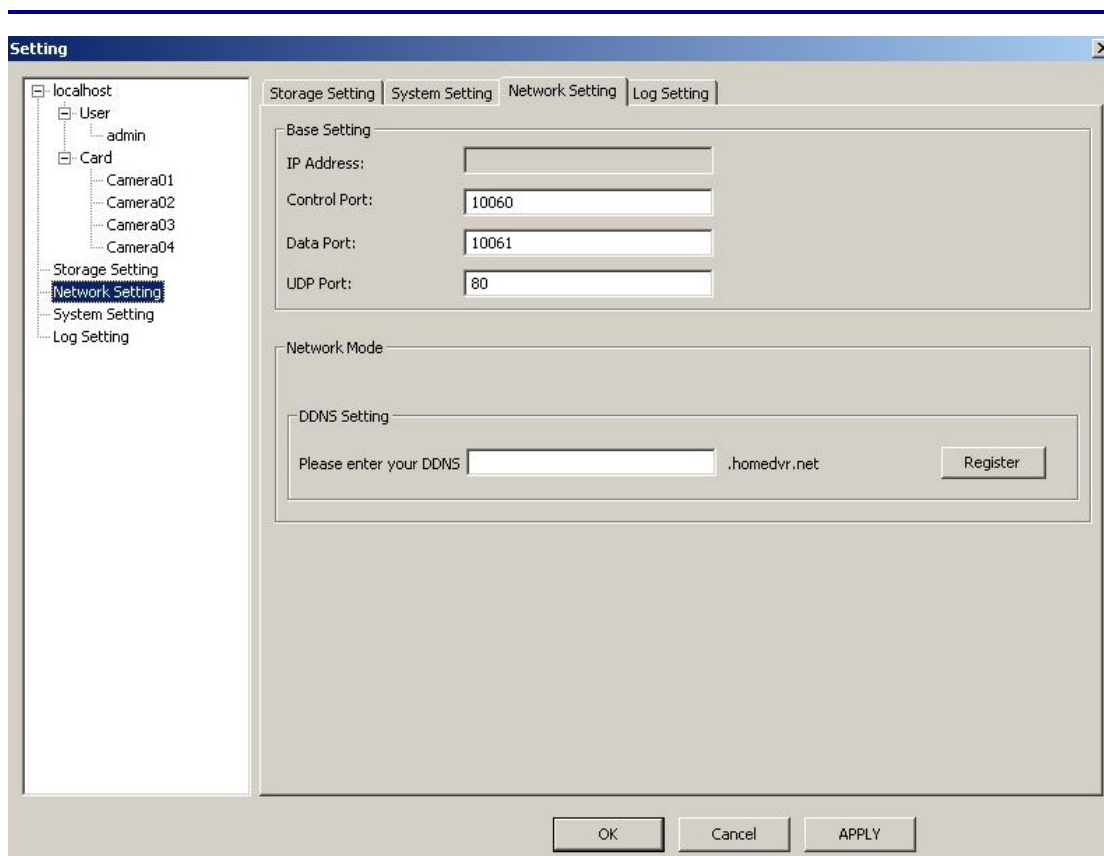
① graphics render settings: the corresponding parameters according to their own computer graphics configuration settings, and has better video effect.

② screen cycle time: on behalf of the main interface screen to enter the polling state, this time all the small screen switching time.

③ OSD configuration: if elected, each of the small screen on the main interface corresponds to the name of the device and the current time is displayed for easy user identification on the small screen monitoring locations.

④ other system settings: set of users according to their needs.

Network Settings



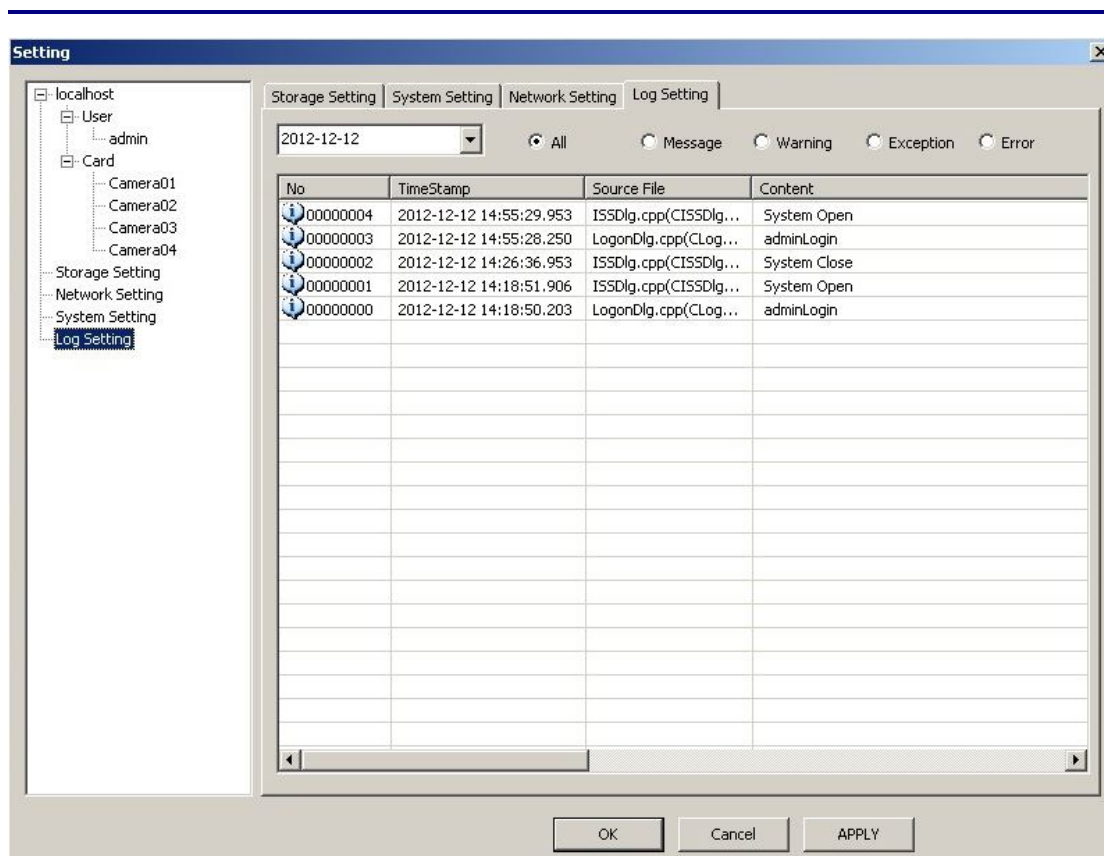
① basic settings:

Communication port HTTP port for the server program that provides network services, such as special needs do not change the control port and data port is used for communication between the server program and the client program, the client or IE end connection, please ensure that port settings the same.

② dynamic domain name settings (DDNS settings):

Own domain name the server www.homedvr.net provide Domain Name Service If you do not have to register a domain name service, please click on the "Register" button, you can use the domain name after the success of the domain name registration for remote access. Using the Domain Name Service, please ensure both network smooth!

Log Settings

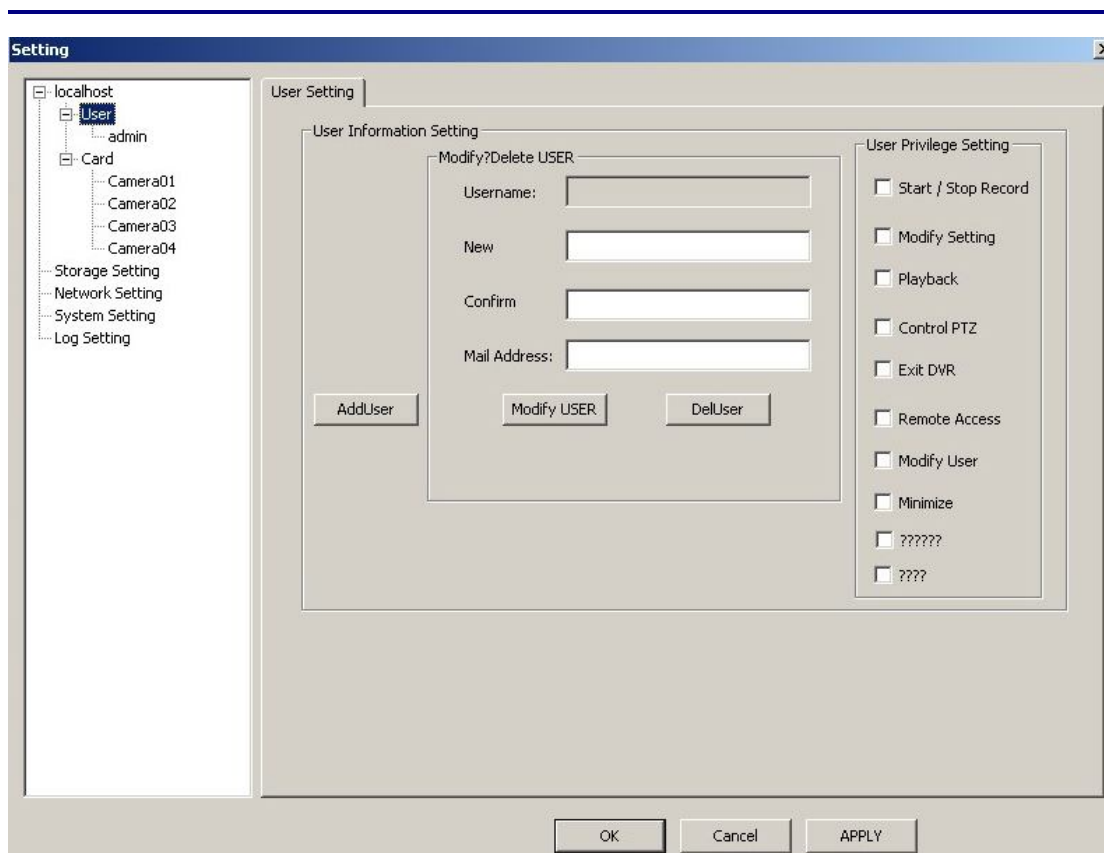


Description:

View system running log of the specified date, including alarm system during system operation, abnormal errors.

Select the date you want to find, log type can be found.

User Settings



The first time you use the software, please enter the settings, add users and user rights settings prevent ordinary users for the administrator account to change settings, resulting in unnecessary losses. The administrator has the highest increase, delete, and manage user permissions.

Right equipment list box below to add a user> button, to the increase in the current system user, enter the new user's password and repeat password, the description of the increase in the current new users, such as: security manager, security chief, security Finally, enter the Email address (optional): If this new operator Email address is recommended to fill alarm can send pictures to the above email address alarm information.



Such as adding a new user the kairui, click OK to re-open configuration, you can

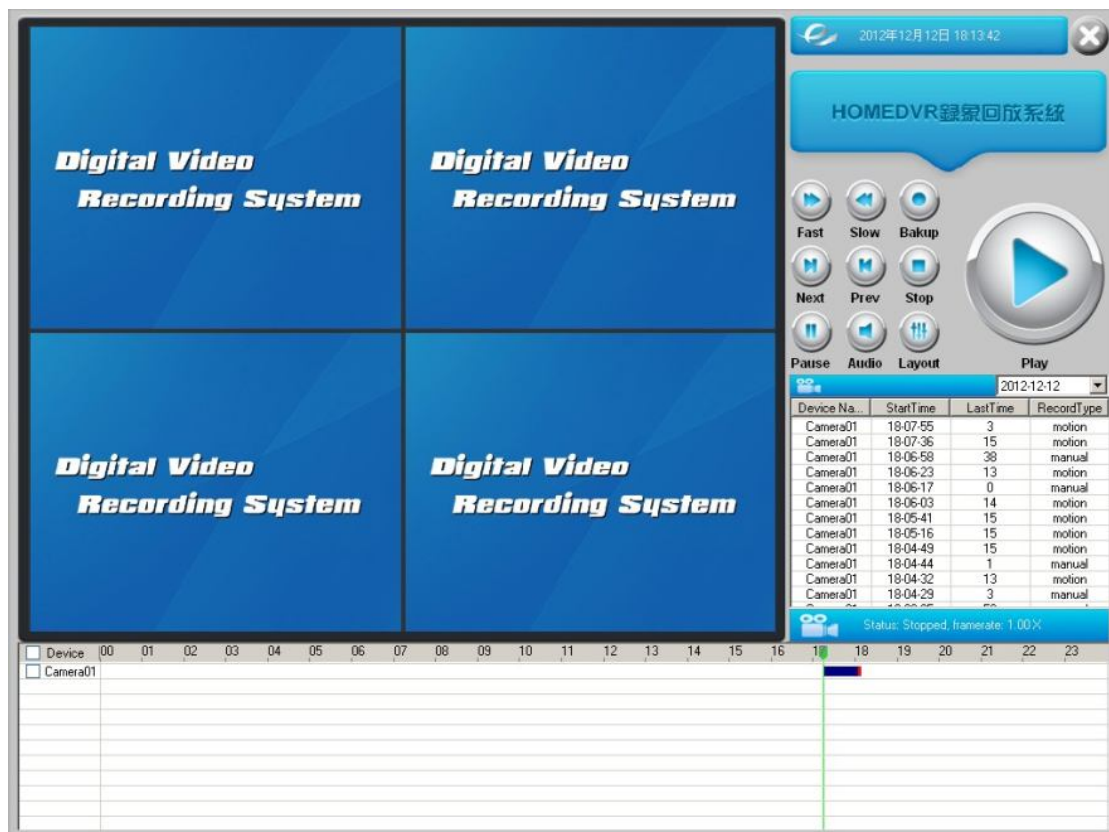
see on Figure Users kairui.

To delete a user:

Selected does not require a user name, click on the right side of the device list box below the <delete> button to remove the user.

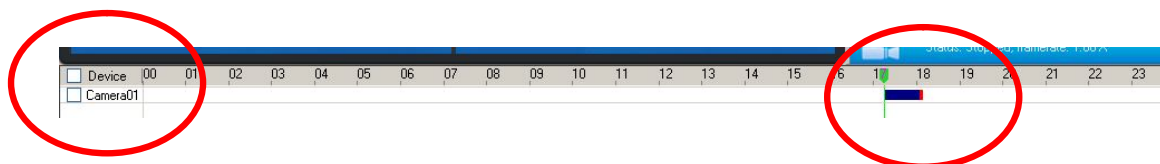
Add a user or change the settings, you need to click on the <the Applications> button to save the settings.

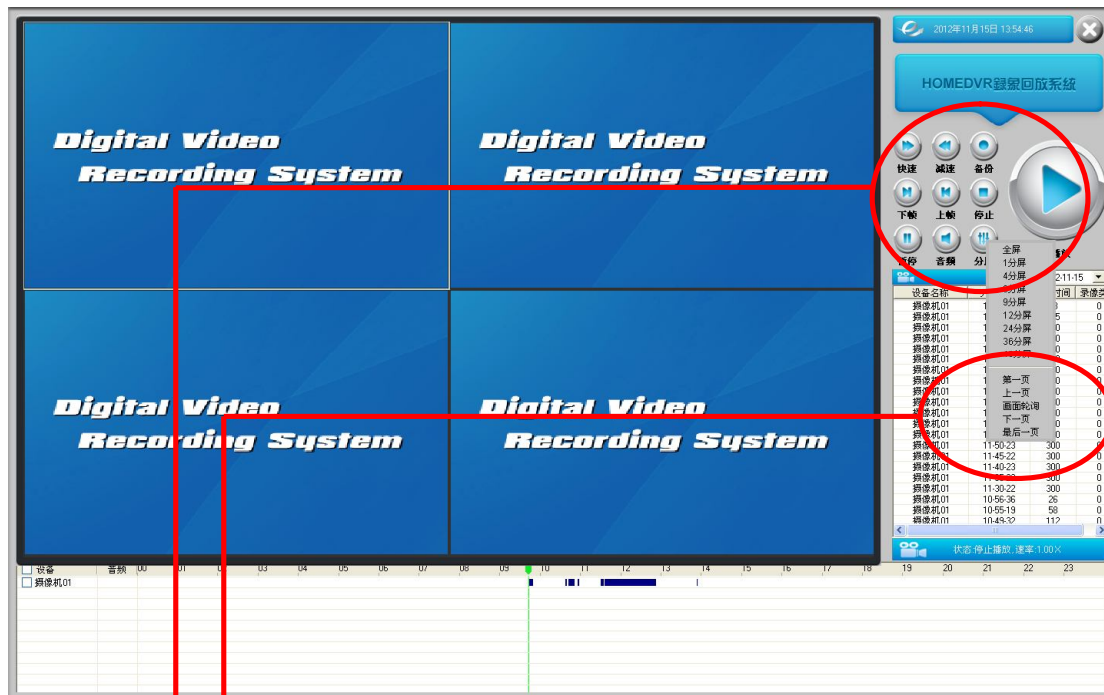
Playback Software



Description:

- 1) video data, the blue stripes represent continuous video file, the red stripes represent the dynamic motion detection recording file.
- 2) Playback video: first select the camera to playback the Green handle drag to the need to watch the time period to play.
- 3) the bottom of the page you can check multiple cameras, playback of multiple cameras simultaneously.





The Function of Read Circle is respectively for playback, fast play, slow play, stop, next frame action decomposition, pause, backup (this feature is not yet complete)

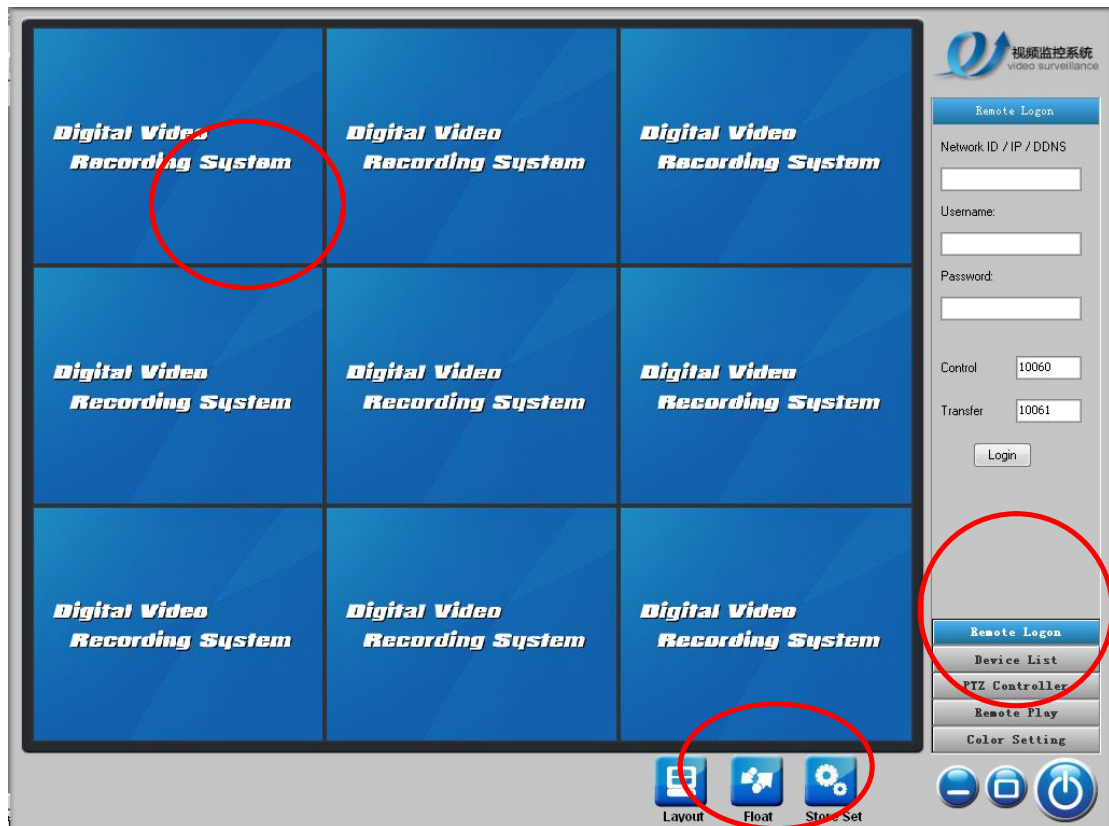
Chick which one You want to control the video and then Execution

This section features: First, Previous, window round robin, the next page, last page

Window round robin: automatic beat to the next window, and an infinite loop.

Client Software

1. client interface



Interface Description:

| | |
|-------------------|--|
| ①Playback window | Display Video and window control |
| ②Layout | Setting the layout and video save path |
| ③List of features | Telnet, equipment list, PTZ control, remote playback, remote palette |

2. Remote login

Enter E Net number of remote / IP address / DDNS user name, password, default is: admin

Remote Logon

Network ID / IP / DDNS

Username:

Password:

Control

10060

Transfer

10061

Login

Connection mode:

TCP: General for Telecom, China Unicom.

P2P: for the part of the IP address of the network.

P2P +: not currently supported.

Control port number: 10060


Data port number: 10061


1. Equipment list


Device List


▼ 127.0.0.1

▼ Card

 Camera01

 Camera02

 Camera03

 Camera04

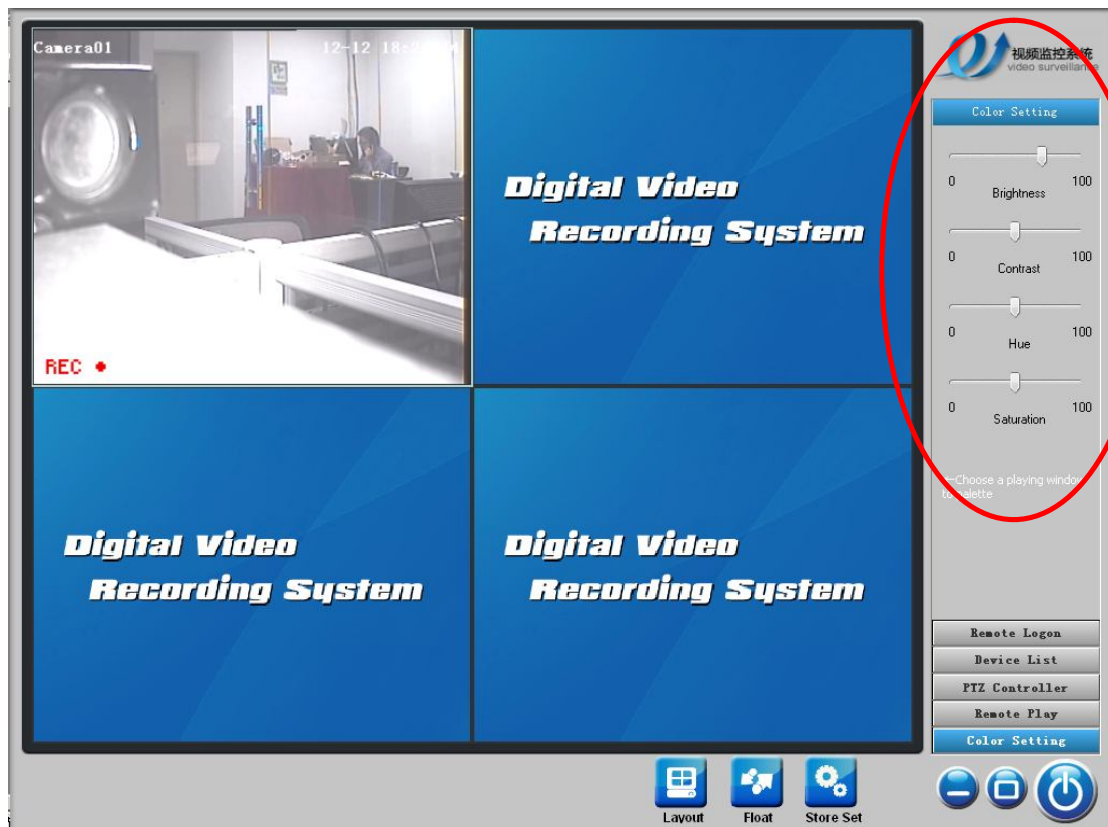
2. PTZ control



3. Remote playback Find - Select the video file

[illegible]

4. remote tinting the screen color control



IE browser remote access

Preparatory Work

The Company's products have passed the Microsoft digital signature, under normal circumstances, open the pages change automatically install activex control, if special circumstances can not be installed properly, please follow the instructions below to adjust your browser settings.

①Open the IE browser

②click Tools Internet Options



③Click Security, select the Internet and click Custom Level.



④Download unsigned ActiveX controls, select Enable, and then click OK.

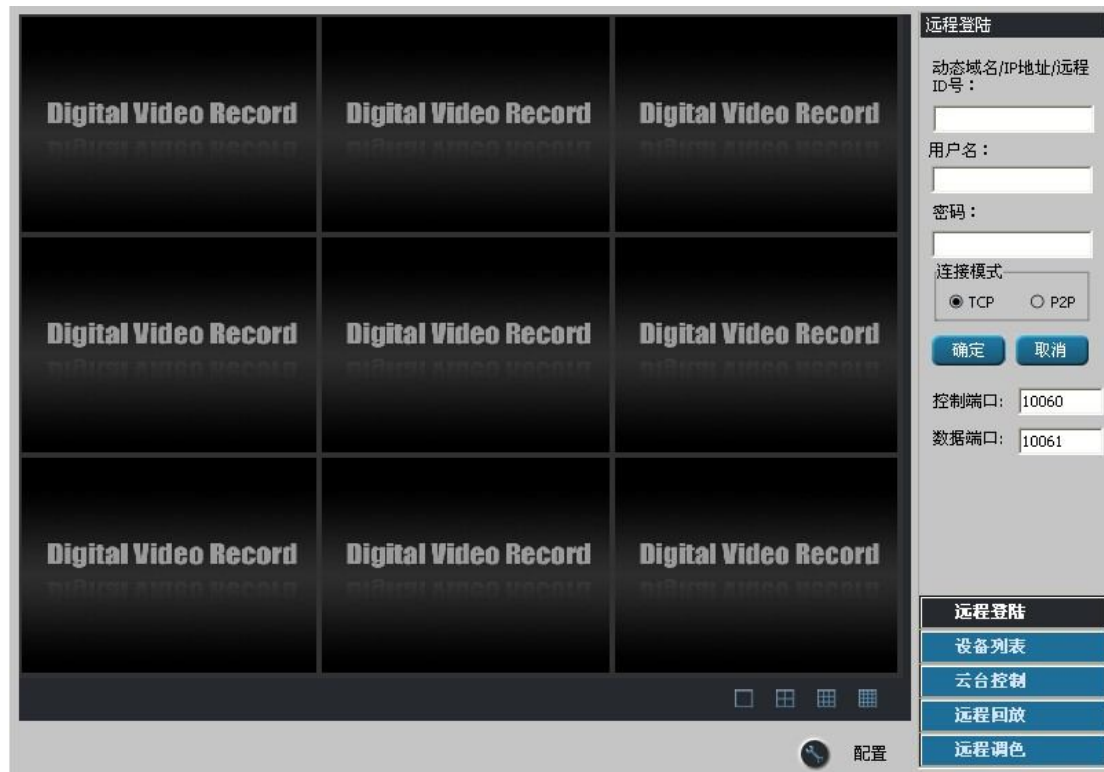


⑤Login <http://www.homedvr.net/>

⑥find below the address bar (close to the address bar) to prevent box

⑦right-click to install this control, wait 5 minutes.

Open is the following interface:



Enter the number of remote E Netcom / IP address / DDNS, user name, password,
default is: admin

Both sides should keep the network traffic

Connection mode

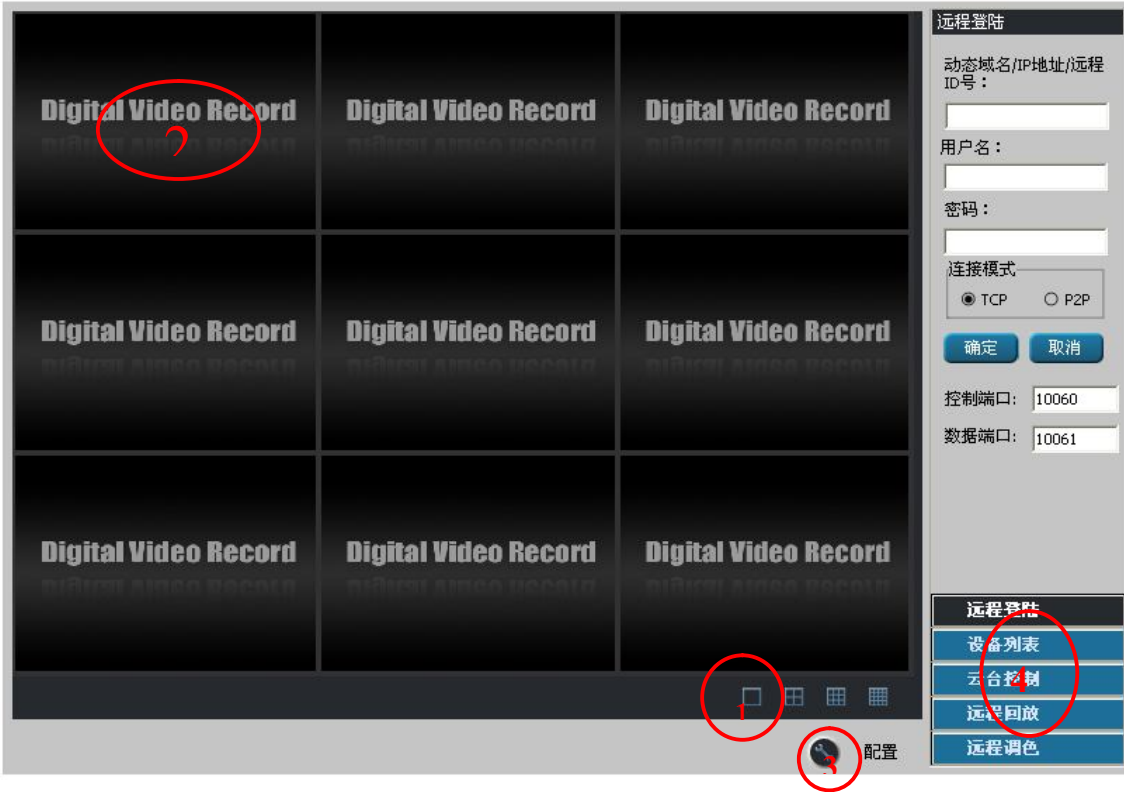
TCP: general for China Unicom, China Telecom.

P2P: generally used for part of the IP address of the network.

Control port: 10060

Data port: 10061

IE remote controls Features



Interface Description:

| | |
|----------------------------|----------------------------------|
| ①Split-screen button | Were 14,916 split screen |
| ②Playback window | Display Video and window control |
| ③Configuration (save path) | Video and screen shots |
| ④List of features | Operation and debugging video |

Right-video screen



- ①frame grabbing (screen shot)
- ②full screen

List of Features



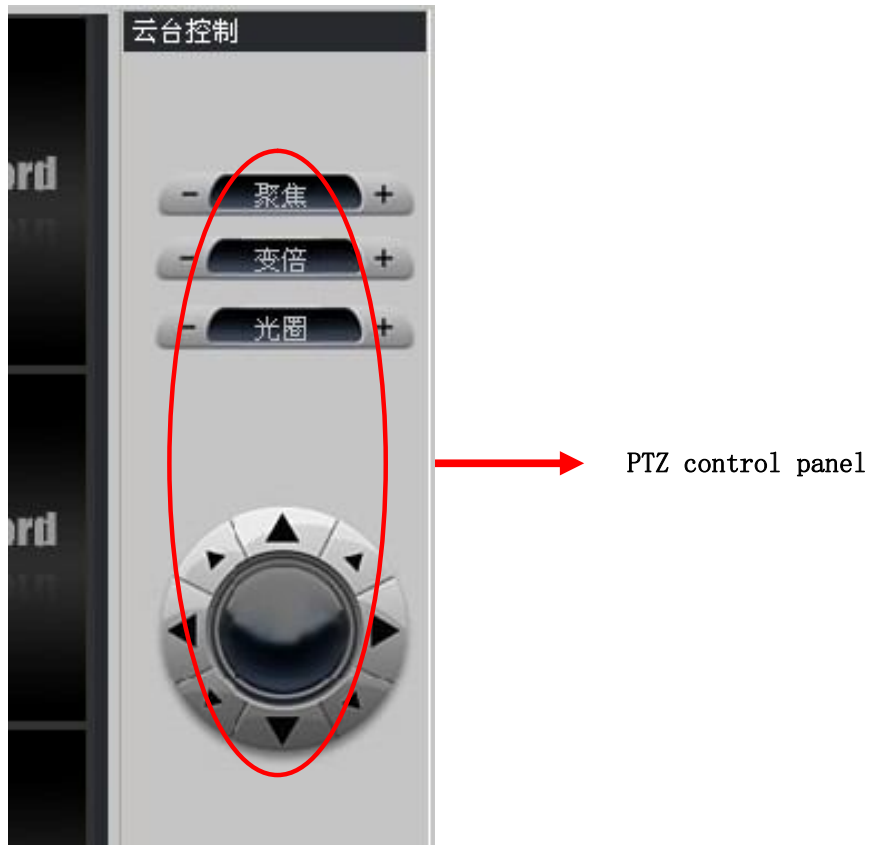
Manual recording

Select manual recording, the system will stop the automatic recording control, user manual recording control channel control panel interface through the list of devices, right-click to the following figure:

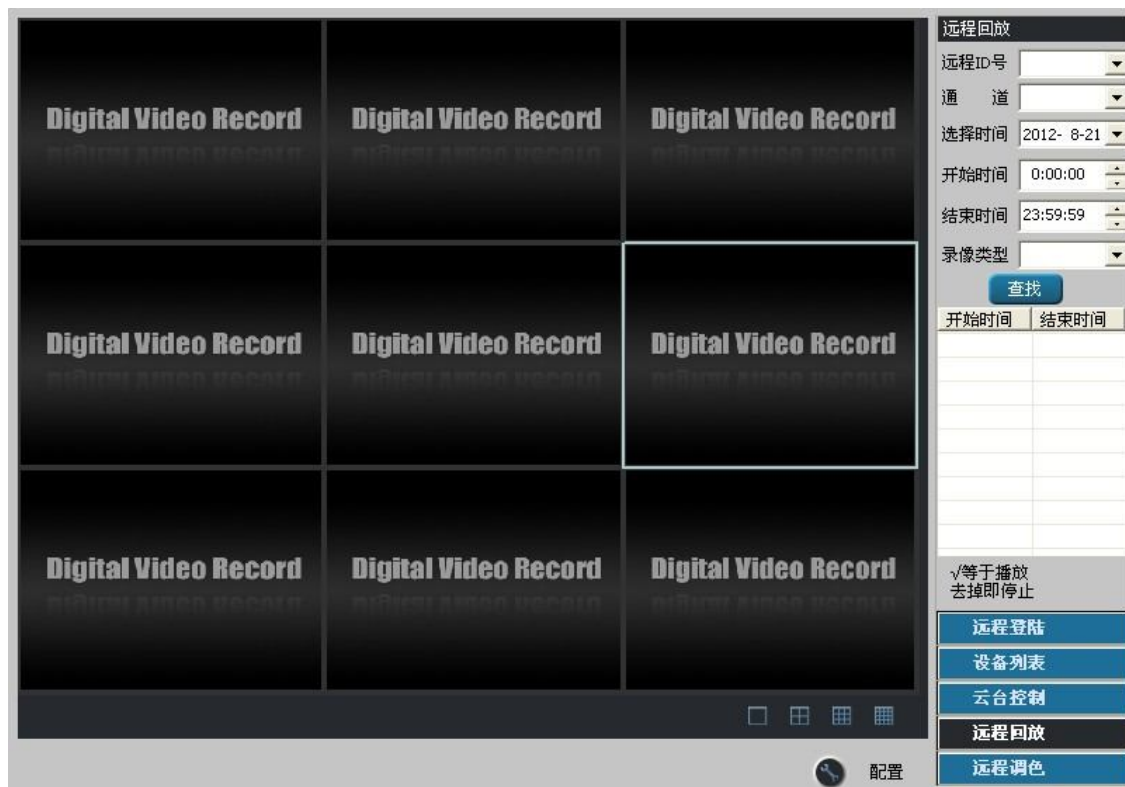


Remote PTZ Control

Operating PTZ: up and down, automatic line scan, zoom, etc.



Remote Playback

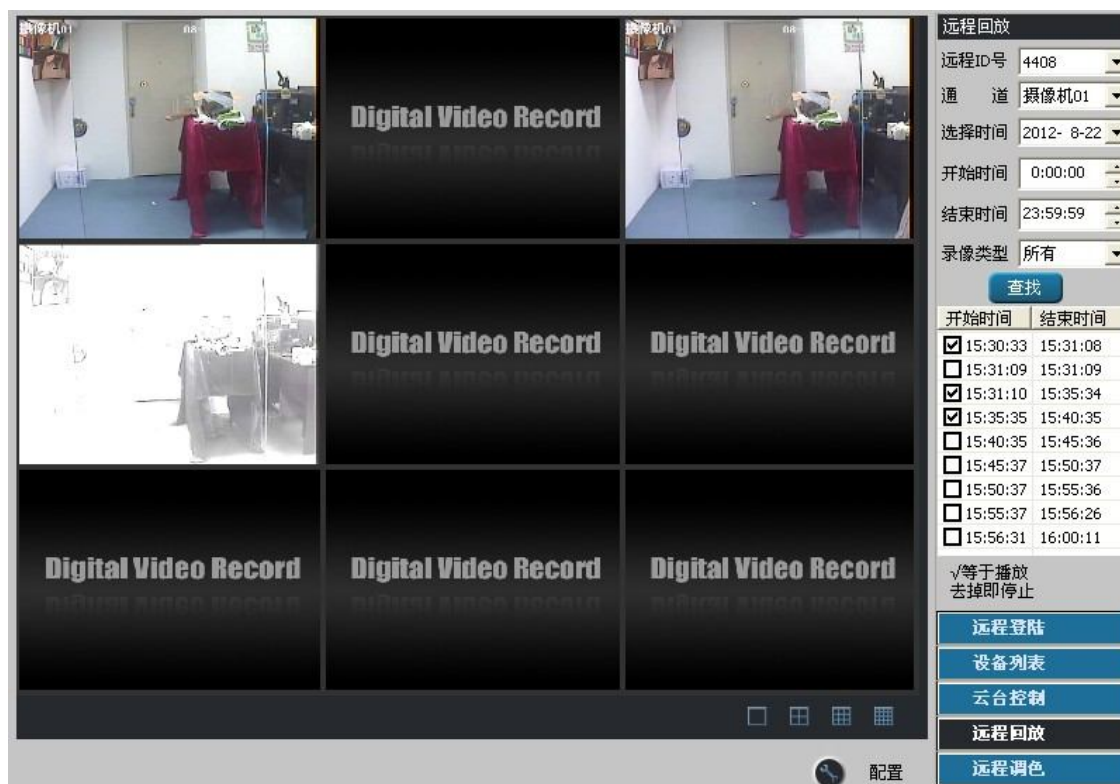


Choose to fill in the remote ID number, channel, select a time, start time, end time, video type, and click Find to wait 1-2 seconds. After the following figure:

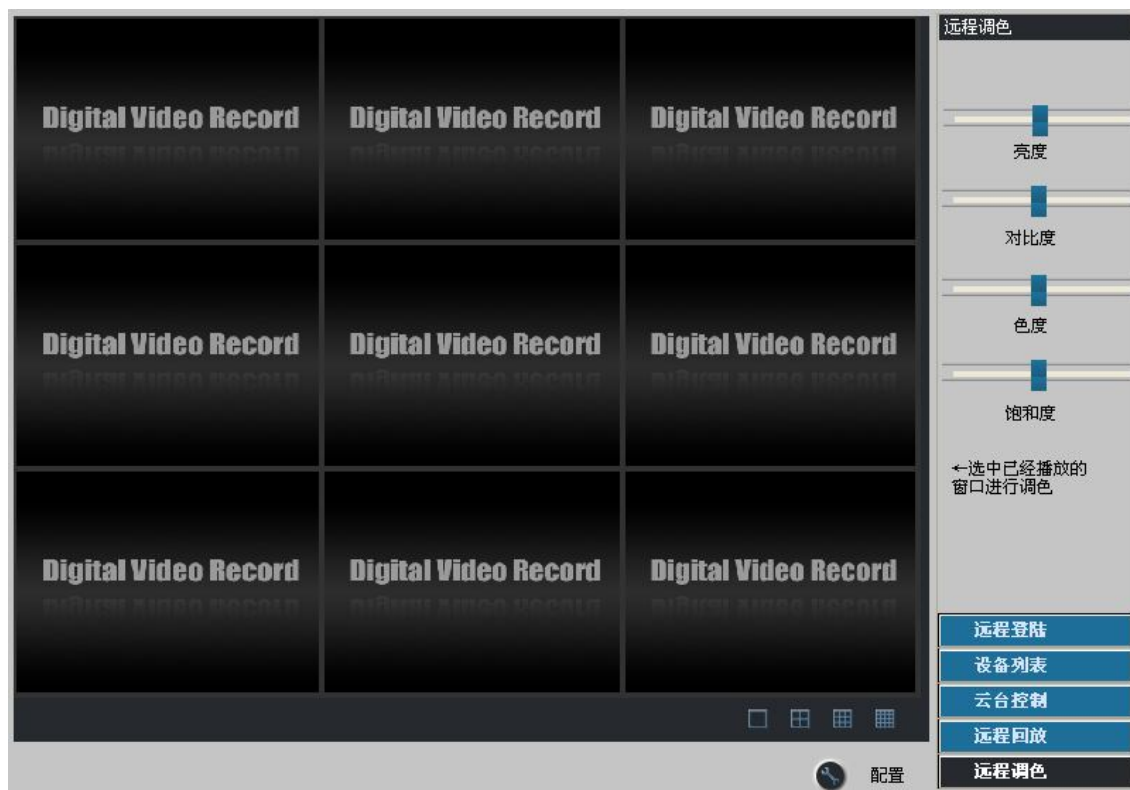
You find these video



Left-click to select the video that is playing, remove selected cease:



Remote Color Setting



Page Description:

Drag the brightness, color, contrast, saturation button in the video preview window on the left you can see the effect of setting, adjusted to the best effect, click the <Applications> button to apply this setting.

Click the camera you want toned, hold down the left button to drag the color button on the right after the release, you can wait for one second.



Mobile Remote Access

Compatibility List

| Phone system | Software format | 6818 | 6816 | 9800 | 6868 |
|--------------|-----------------|---------|------------------|------------------|---------|
| Jave | Jpeg | Support | Support | Support | Support |
| | H. 264 | Support | Does not support | Does not support | Support |
| Android | Jpeg | Support | Support | Support | Support |
| | H. 264 | Support | Does not support | Does not support | Support |
| Apple | Jpeg | Support | Support | Support | Support |
| | H. 264 | Support | Does not support | Does not support | Support |

Android Phone

- ① Open Network
- ② open a browser, log <http://www.homedvr.net/>
- ③ Click Android mobile phone software, download and install
- ④ Open After installing the software Work_02
- ⑤ Enter the To remote IP / Dynamic Domain Name / Network ID username admin password admin (both sides must be smooth network)
- ⑥ After successful login will display all camera channel, click the channel you want to monitor you.

Java Phone

Apple Phone

Frequently Asked Questions

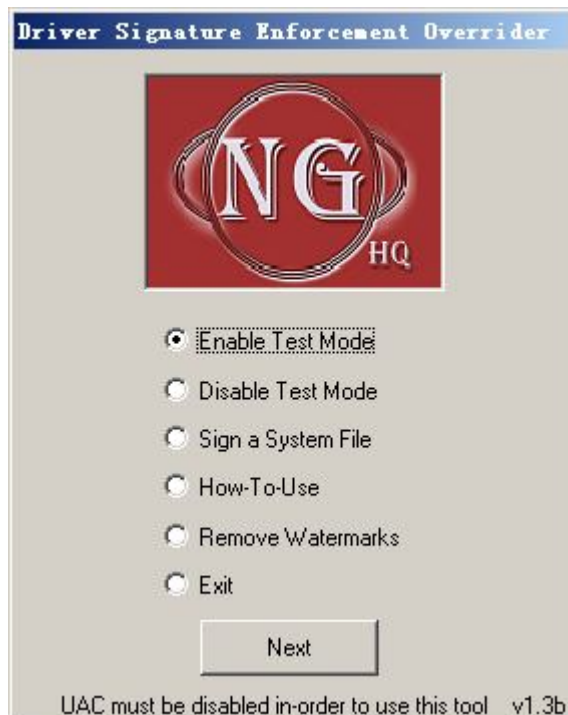
Why run the software does not have a video screen after the installation is completed?

Make sure the correct hardware monitoring card installed in a PCI slot and fixed. Verify that the power to install the card corresponding drive and make sure that the camera is working properly connected open screen preview option Antong monitoring software.

Map, turn off the computer, unplug the capture card, check whether the Goldfinger at stained with stolen goods, eraser, paper towel to wipe clean the slot inside blocked with debris, clean up, and then after the capture card test .

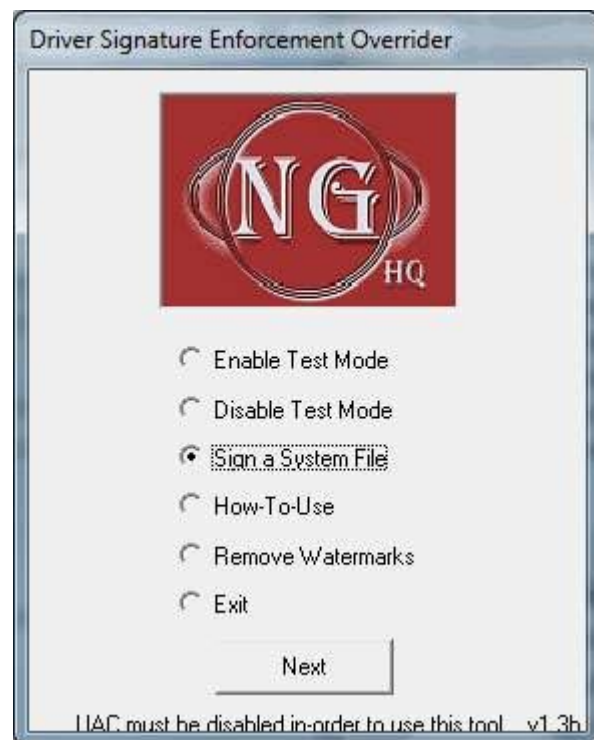
How to install the diever of 681X card on WIN7-64?

1) driver to enter the software installation directory \ x86_64 directory, run dseo.exe, click "Enable Test Mode" option enabled test mode, and then Next

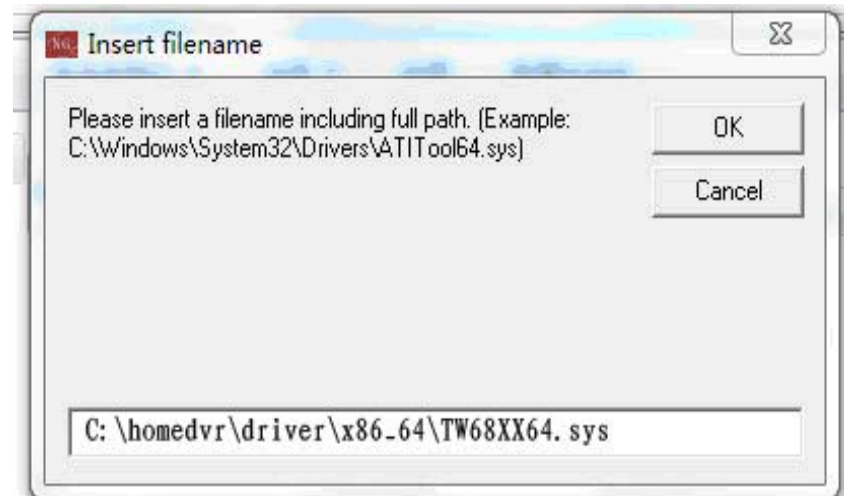


2) Click "Sign a System File" option and manually enter their address so through

DSEO test signature certification. Then restart the system to automatically enter the test mode, the driver has been properly loaded.



3) manually enter the digital signature driver path, as follows



4) Start menu -> Control Panel -> Device Manager. Point right on the computer name of the top in the list of devices in Device Manager ->Add Browse ->Next ->install from the hard drive to the C the outdated hard ->Next ->install hardware that I manually select from a list of "C:\Homedvr\driver\x86_64" directory under the TW68XX_64.inf determined. If the installation is successful can view the Device Manager - 4 "Video Capture Device 64bit (TW6816) devices in the system equipment and 4" Audio Capture Device 64bit (TW6816) "equipment

Why run the software without any error, but the main interface does not have a video screen?

Such a situation occur that your graphics card is not installed the correct graphics card driver, enter the settings, system settings, select the above rendering mode inside Direct Draw restart the software can.

How to solve the question of the main interface is not covering the entire display screen?

We currently support 10 kinds of resolution, 1024x768, 1280x1024, 1360x768, 1366x768, 1440x900, 1600x900, 1600x1200, 1680x1050, 1920x1080, 1920x1200; if not the 10 resolution, the software will automatically switch to 1024x768 resolution. It is recommended to use more than 10 kinds of resolution, so that the software to achieve the best results.

Why can not video after the disk is full?

Maybe the previous version of the software you use is 1.21.09 greater than or equal to.

Why use the E Netcom can not remotely?

The E China Netcom No. currently using TCP connection, it is necessary to ensure the router to install the capture card host open UPNP function. And restart the software and wait for 1 minute.

Please restart if router's UPNP already open to, make sure that the router's DMZ host has closed, and to ensure that there is no any manual port mapping or virtual server occupied 10060, 10061 ports to avoid and UPNP automatic mapping of conflict, the completion of these operations, software and wait for 1 minute.

If the router does not support UPNP mapping, this time on the need to manually add port mapping rules is 10060 to 10060, 10061 two ports TCP protocol mapping to the router, 10061 port can be.

If the on Syria method is unable to achieve remote access, please check the router's WAN port IP address and ip.qq.com of IP address are the same, and if not, can only use UDP penetration mode (P2P) networked.

How to implement port mapping by Router OS?

Router OS Cs 服务器 端口映射及其回流

CS 服务器(192.168.1.218)先是映射端口吧

winbox 界面

如图

/ip firewall nat

add

映射

NAT Rule <-> 218.21.35.242/:27016

General Advanced Extra Action Statistics

Chain: **dstnat**

Src. Address:

Dst. Address: **218.21.35.242**

Protocol: **17 (udp)**

Src. Port:

Dst. Port: **27016**

In. Interface:

Out. Interface:

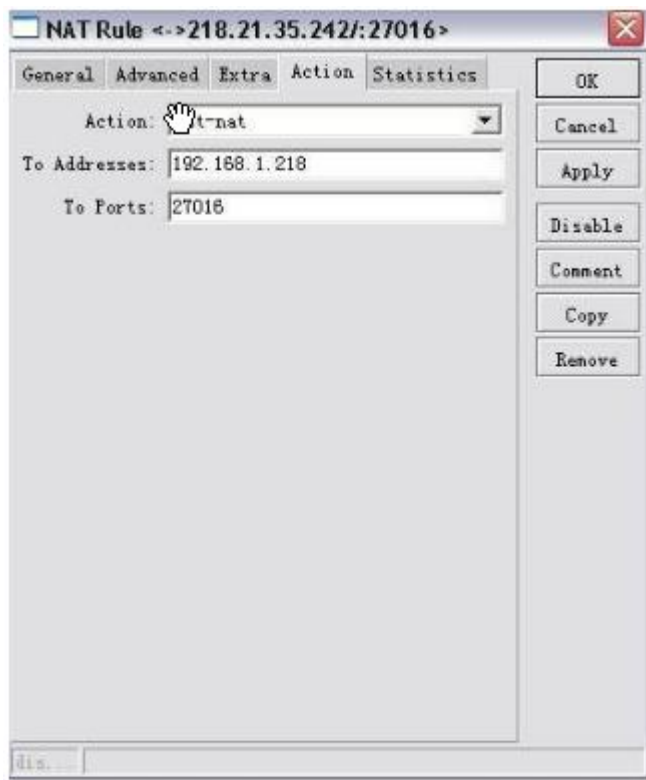
Packet Mark:

Connection Mark:

Routing Mark:

Connection Type:

OK Cancel Apply Disable Comment Copy Remove



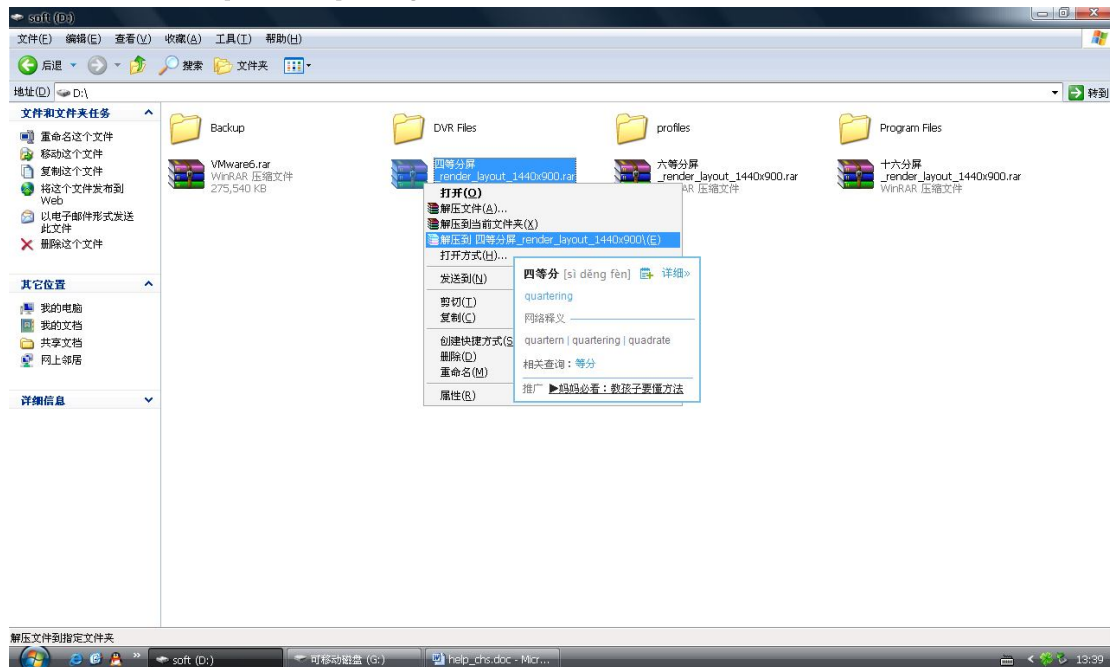
回流也就是 内网用外网 IP 也可以访问到 CS 服务器

3

How to achieve 4, 6 and 16 split screen monitor?

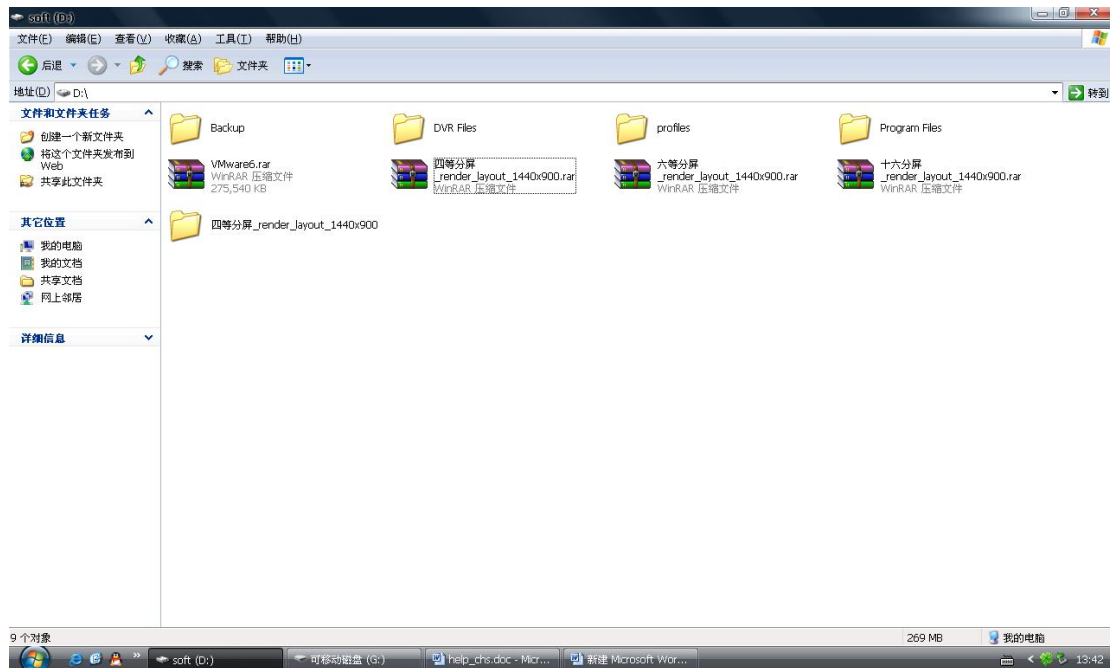
Introduce the following display resolution (1440x900), 4 split screen, for example:

1、find the compressed package (ie sub-the screen source files) as shown below:

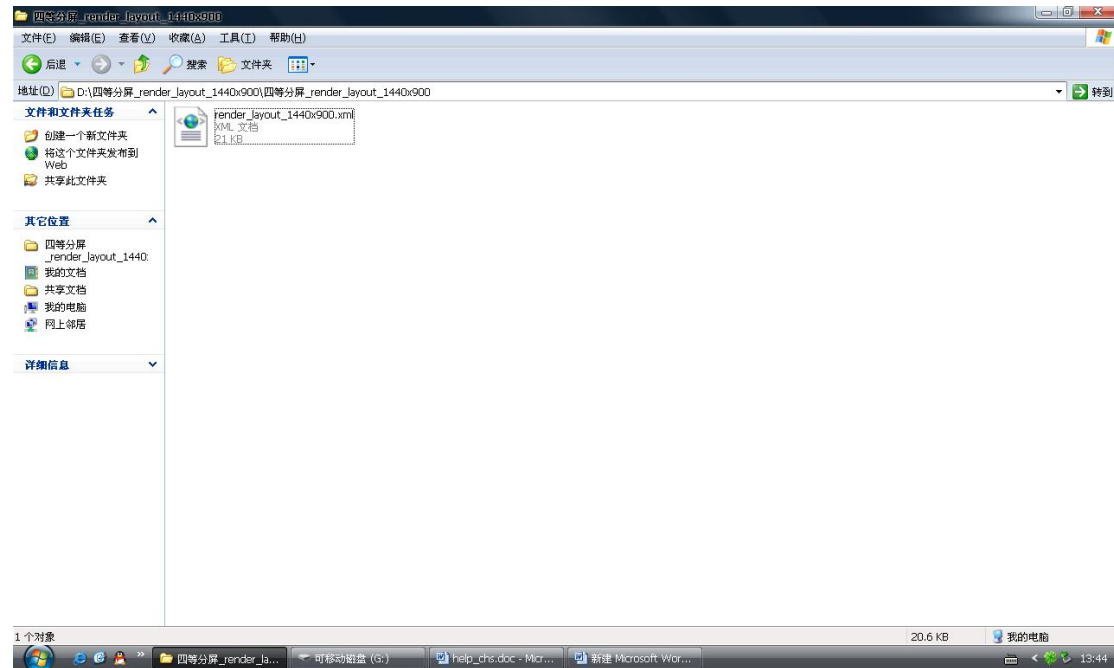


2、extract it (you want the to set few decile screen to unpack which).

After extracting as follows:

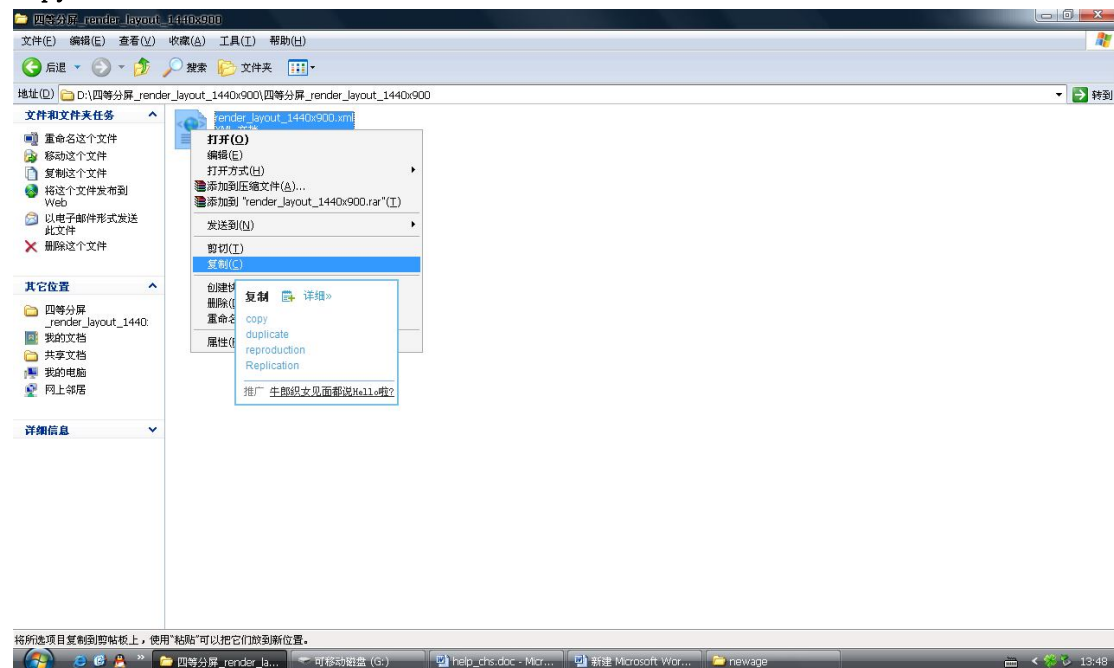


3、 Open quad_render_layout_1440x900 file folder, find render_layout_1440x900.xml file.

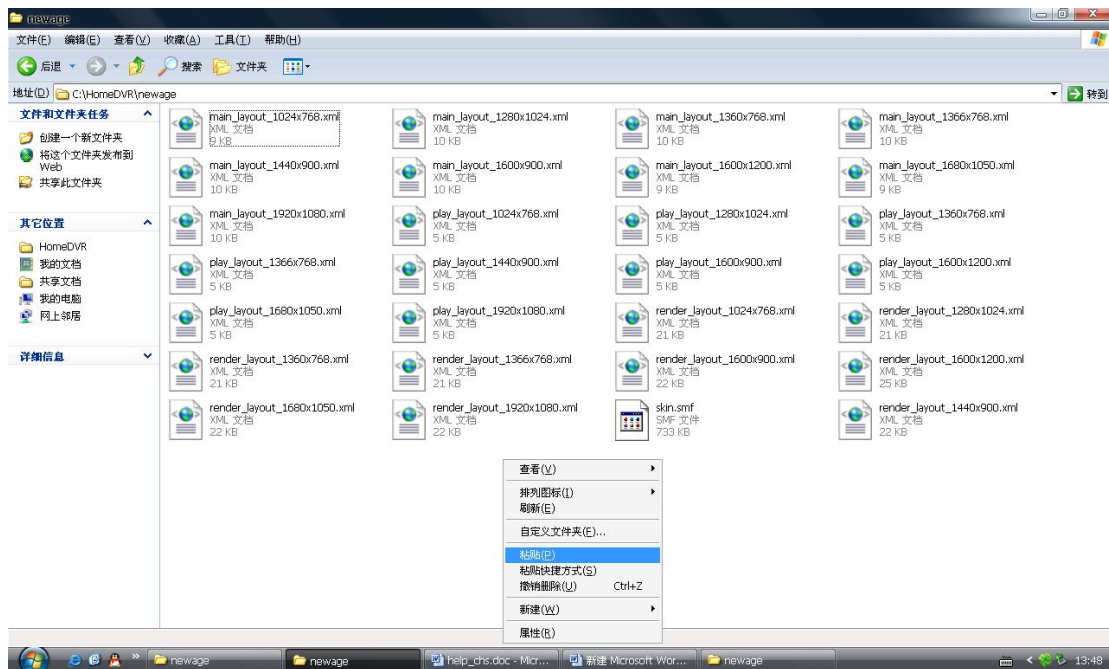


4、 Copy this file to the installation directory / newage (default installation directory in C: \ HomeDVR \ newage)

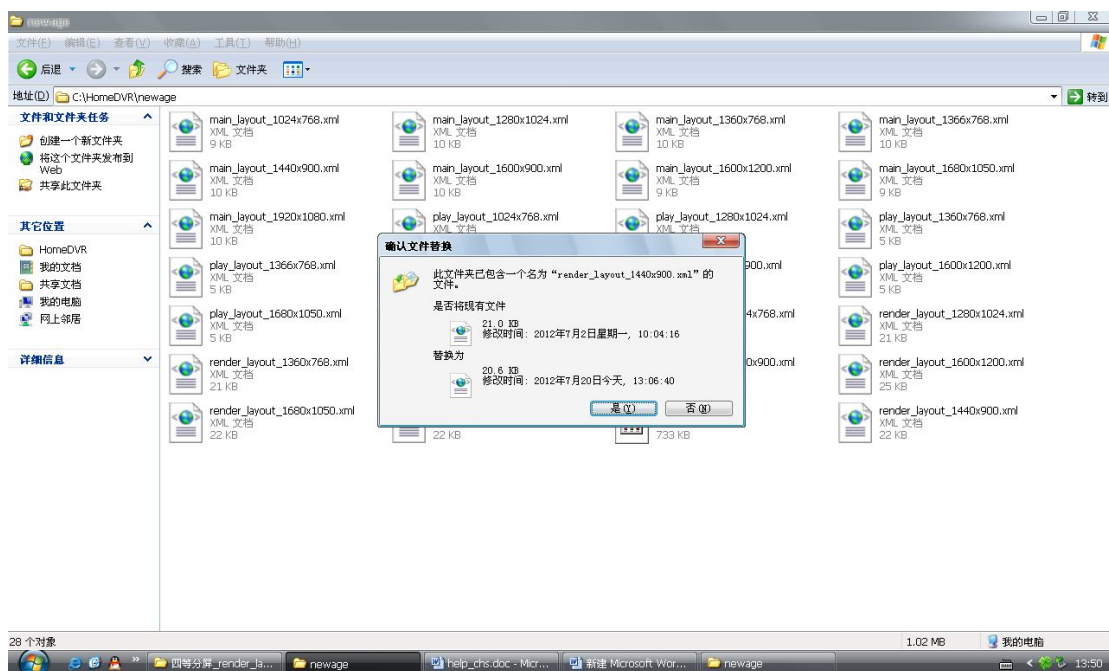
Copy:



Paste:



Click "Yes"



5、Close the software, restart

Why installed the software but can not used from June 1, 2012 ?

From June 1, 2012, the Company's research with a new encryption chip, so it is necessary to match the new software, the installation of the new software can be used.

How to install monitoring software description on Windows 2003?

Windows2003 Server Edition operating system. In fact, with Windows xp is the same kernel,

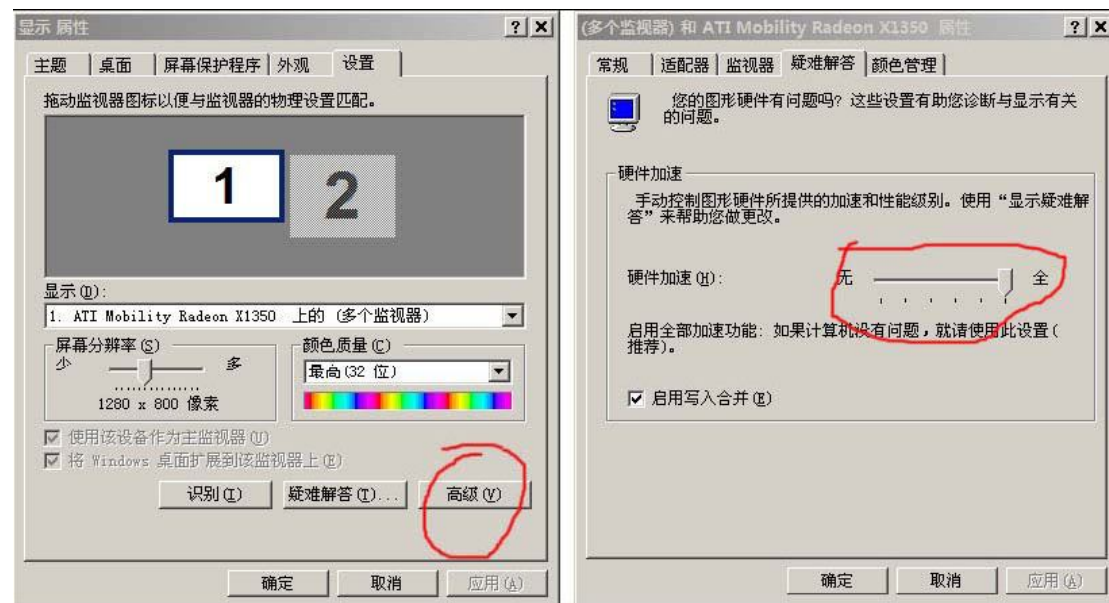
The biggest difference is that on the show of support, because servers generally do not need to display the output. So theoretically

Speaking xp can use monitoring software, 2003 should also be able to use, but need to do some extra display settings

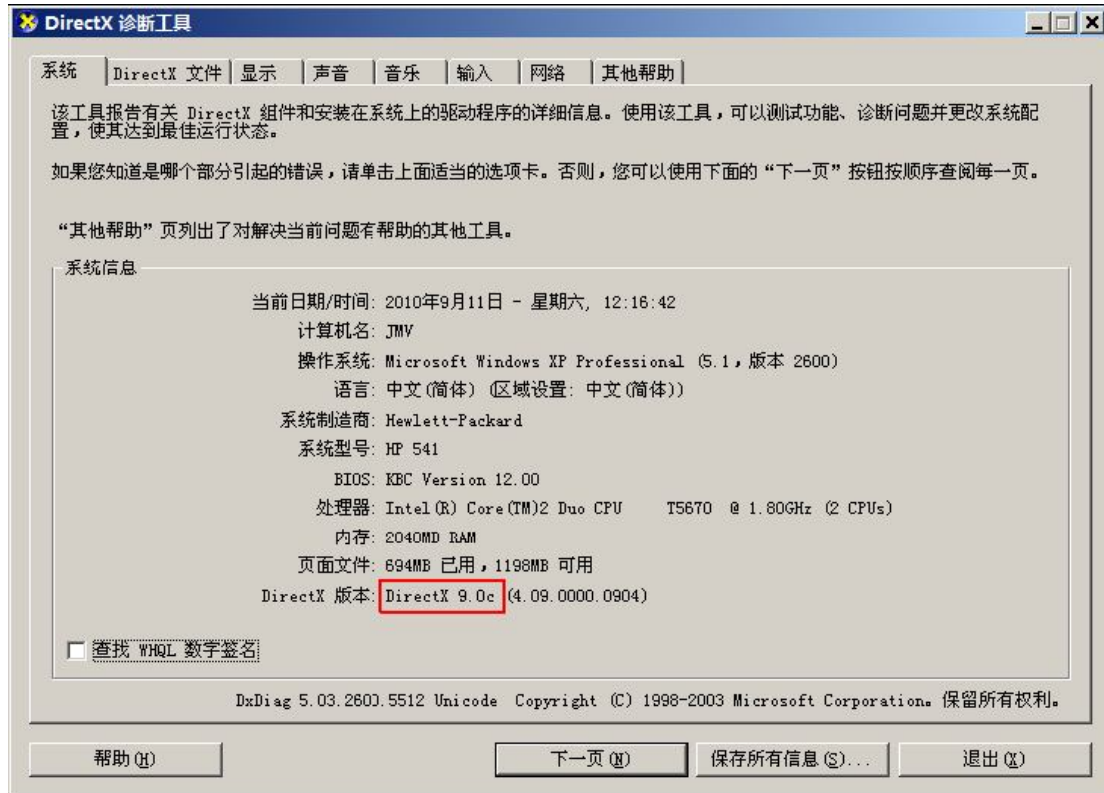
To support the graphics hardware acceleration.

(1) In the Device Manager to confirm that the graphics driver is installed correctly, otherwise it should be installed manually. Since 2003 General graphics driver is not installed by default.

(2) in an empty area of the desktop, click the right-Point Properties, select the Settings tab. Select Troubleshooting marked point senior Sign. Confirm hardware acceleration selected as the full acceleration. xp default 2003 default is no. See belowFigure:



(3) Run, enter dxdiag, open the following procedures:



Note the red box displayed at the version number should be greater than or equal to 9.0, and whether it should be installed manually. xp
 The default is to install 9.0 installed by default in 2003 is 8.0 or not installed.
 (4) Select the Display Properties page

