

# **A3 Scanner**

**Uniscan M800U**

**English**

**User Manual**



## Acquire the Scanner TWAIN Driver

The TWAIN driver is the scanning module provided with your scanner. It is easily accessed from within the bundled scanner software or from within any TWAIN-compliant program. Before you start with the steps below, be sure you have installed and configured the bundled scanner software.

1. Launch Windows.
2. Run the host TWAIN-compliant software (e.g. Photo Express)
3. Call up the TWAIN Data Source by selecting **Acquire** from the **File** menu. (In some programs, the **Acquire** command will appear in a submenu under the **Import** command.) The TWAIN dialog box will appear in a submenu under the **Import** command.

The TWAIN dialog box contains control settings, which you must set prior to scanning a document. The basic steps to scan a document are:

1. Prescan the document.
2. Set the desired image area to be scanned.
3. Select the scan source.
4. Select the desired scan mode.
5. Select the desired resolution.
6. Click on the **Scan** button.





## The Dialog Box

The TWAIN dialog box is divided into two sections: the left section where most of the control settings are located, and the right section, which is the Preview Window.



### Folders

Contain different control settings

### Preview Window

Used for viewing the prescan image and selecting the final scan area



## The Main Folder

### Scan Mode

Determines how the scanner will read the image and refers to how the image will be reproduced after it is scanned.

### Scan Source

Sets the media type of the document to be scanned.

### Scan Size

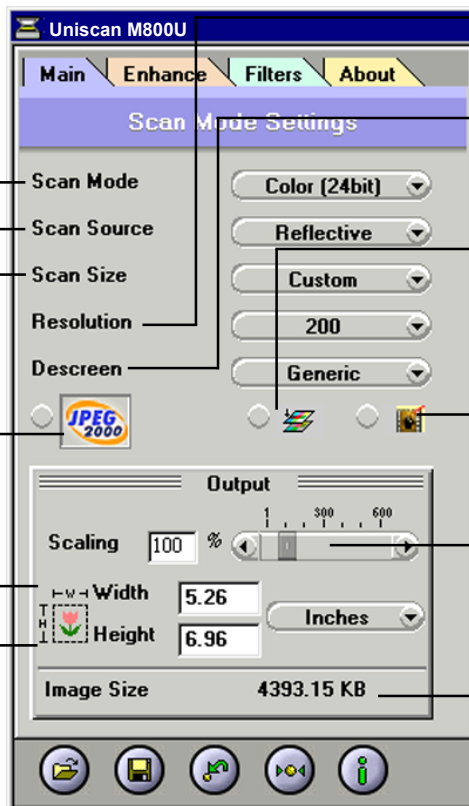
Refers to the size of the image or document that you are about to scan.

### JPEG2000 Scan

The latest image compression standard that usually provides smaller file size and higher image quality than the original JPEG.

### Width and Length

Show the dimensions of the image area inside the Crop Frame.



### Resolution

Sets the resolution in dots per inch (dpi).

### Descreen

Sets the media type of the document to be scanned to reduce image noise.

### Color Matching Control

Color Matching allows the scanner to more accurately reflect the actual colors of the original image.

### Photo Refresh

Photo Refresh allows you to automatically lighten and sharpen the scanned image by clicking on its icon. This function is applicable when you are scanning images in Color 24bit.

### Output Scaling

Changes the dimensions of the final output.

### Image Size

Displays the amount of computer space needed to display or save the selected image area.



## The Enhancement Folder: Brightness/Contrast Control

### Brightness/Contrast Control

#### Brightness Control

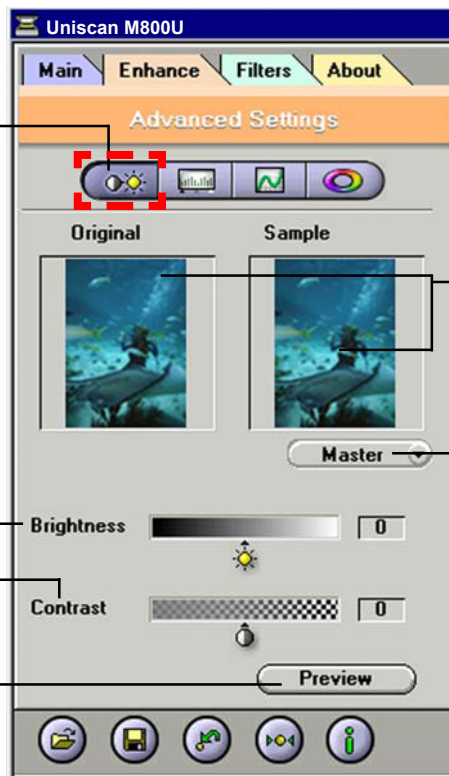
Allows you to adjust the overall amount of light in the image through a range of values (-127 ~0~+127).

#### Contrast Control

The Contrast Control allows you to adjust the overall amount of **black** areas or white areas in the image through a range of values (-127~0~+127).

#### Preview Button

This button allows you to see the effect of any changes made to the image prior to scanning. Any changes will appear in the preview window.



#### Thumbnails

Are used to see the effects of any changes in the control settings.

#### Channel Selector Control

Allows you to select the channel layers (red, green and blue) that make up a color image. You can choose to change the channels individually or choose master to change all channels equally and simultaneously.



## The Enhancement Folder: Level Control

### Level Control

#### Histogram

Shows the distribution of the brightness levels in the image.

#### Eyedropper tools

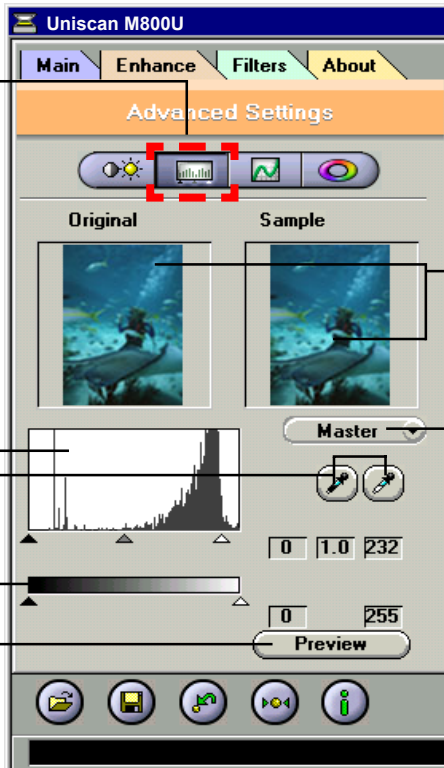
Eyedroppers are used to identify an image's highlights and shadows.

#### Level Control

Use the level slider to adjust an image's contrast and brightness.

#### Preview Button

This button allows you to see the effect of any changes made to the image prior to scanning. Any changes will appear in the preview window.



#### Thumbnails

Are used to see the effects of any changes in the control settings.

#### Channel Selector Control

Allows you to select the channel layers (red, green and blue) that make up a color image. You can choose to change the channels individually or choose master to change all channels equally and simultaneously.



## The Enhancement Folder: Curve Control

### Curve Control

#### Curve Control

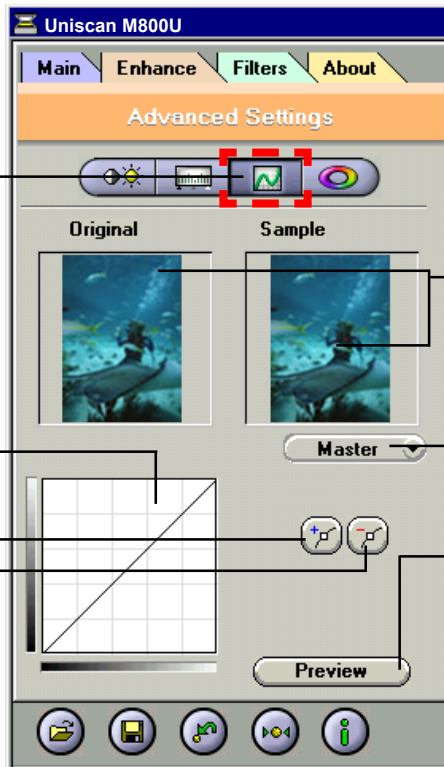
Applying a **curve** to an image enhances favored brightness ranges at the cost of others.

#### Add Anchor

To make a curve, simply place an anchor on the diagonal line and adjust its position. Add more anchors if you have to make a more complex curve.

#### Remove Anchor

You can also remove anchors.



### Thumbnails

Are used to see the effects of any changes in the control settings.

### Channel Selector Control

Allows you to select the channel layers (red, green and blue) that make up a color image. You can choose to change the channels individually or choose master to change all channels equally and simultaneously.

### Preview Button

This button allows you to see the effect of any changes made to the image prior to scanning. Any changes will appear in the preview window.



## The Enhancement Folder: Hue/Saturation Control

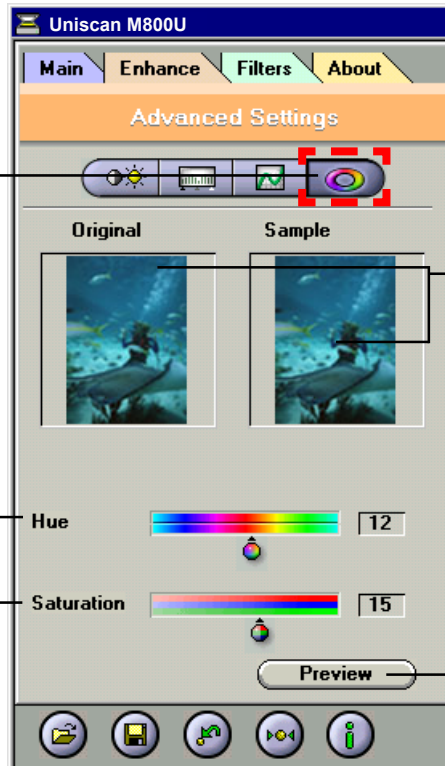
### Hue/Saturation Control

#### Hue Slider

Is composed of two color bars. The upper one is static and the lower one movable. Slide the latter, and you will see the image shift its overall coloring.

#### Saturation Slider

Lets you adjust an image's color purity.



#### Thumbnails

Are used to see the effects of any changes in the control settings.

#### Preview Button

This button allows you to see the effect of any changes made to the image prior to scanning. Any changes will appear in the preview window.





## The Filters Folder

The Filters Tab allows you to adjust the individual effects of the scanned image by applying various filters to the image, prior to scanning.

### None

No filter is applied.

### Blur

Smooths or softens the image.

### Sharpen

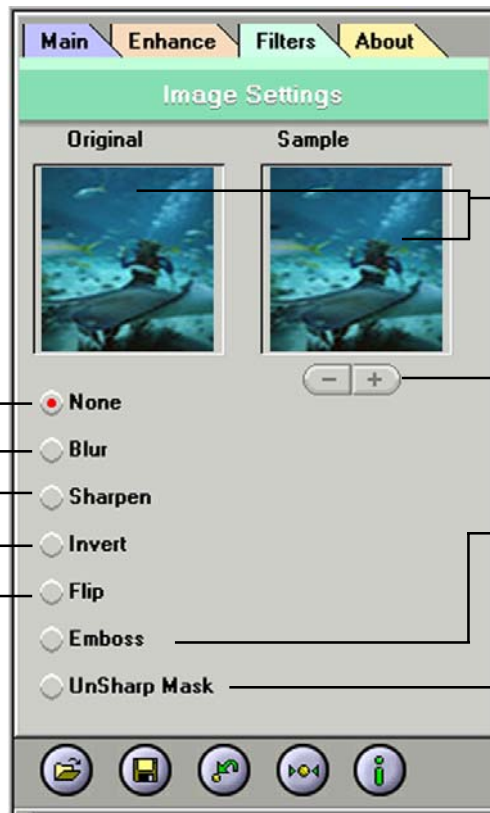
Enhances the detail in the image.

### Invert

Reverses an image to its negative or compliment.

### Flip

Creates a mirror image of the original.



### Thumbnails

Are used to see the effects of the selected filter.

### Filter Control Buttons

Use these buttons to add /subtract a degree of the Blur or Sharpen filter.

### Emboss

Makes the elements in the image appear raised or sunken.

### Unsharp Mask

Emphasizes shape edges and color boundaries.



## The Preview Window

### Cropping Tool

Selects the area in the Preview Window that will be used as the final scan.

### Zoom Tool Button

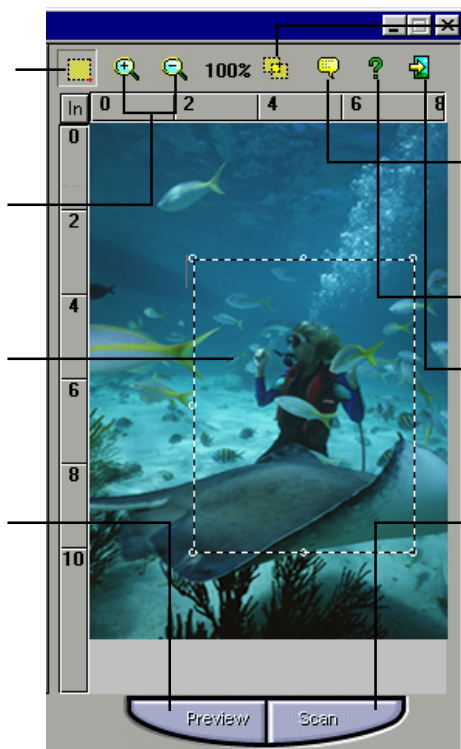
Allows you to **enlarge/shrink** an area of the image in the preview window

### Crop Frame

Outlines the scan area or region that will be included in the final scan.

### Preview Button

Allows you to see the effect of any changes made to the image prior to scanning.



### Batch Scan Button

Allows creation of up to 30 scan regions (or Crop Frames) for multiple scanning.

### Language Setting

Allows you to select the desired language that the dialog box will be displayed in.

### Help Button

Provides On-line Help.

### Exit Button

Click to exit (or close) the TWAIN or Batch Scan Dialog boxes.

### Scan Button

Processes the pre-scanned image, and displays it in the host software (where you opened up the TWAIN dialog box).



### Load Button

Loads previously saved image settings.



### Save Button

Saves the current image settings.



### Previous Button

Returns the most recent selection to its previous setting. (Reloads the last saved image settings.)



### Reset Button

Returns settings to their default values.



### Info Button

Lists information about the current settings being used.

## Prescan the Image

A Preview is a quick low-resolution scan of the entire original image. From this low-resolution scan you can get a clearer idea of the image area you want to include when you click **Scan**. To Preview, the steps are:



1. Place the document face down on the scanner window glass.
2. Click the **Preview** button in the dialog box. After the scanner has scanned the document, the scanned image will appear in the Preview Window. From the Preview image, you can now set the exact image area you wish to include in your final scan.



## Set Up the Scan Parameters

### 1. Set the desired image area to be scanned.

Use the Crop Frame in the Preview Window to outline the image area you wish to scan. Click one of the sides or corners of the Crop Frame and drag it out or in to the desired length and width.

To move the entire Crop Frame, position the mouse cursor inside it and drag with the left mouse button.

**Crop frame** —



Only the area inside the Crop Frame will be included in the resulting scanned image when you click **Scan**. The size information at the bottom of the dialog box is automatically updated when the Crop Frame is resized.

### 2. Select the scan source.

Since we are going to scan a color photograph, choose Reflective.

#### **Reflective:**

When scanning paper-based documents such as photographs or text (magazines, books, or images).

### 3. Select the desired scan mode.

The Scan Mode determines how the scanner will read the image.

- 48-Bit Color captures images in 281 trillion colors
- 24-Bit Color captures images in 16.7 million colors
- CMYK captures images for output to a color printer
- 256 Color captures images in its optimum palette
- 256 Gray captures images in 256 grayscale



- Gray (16 bit) captures 16 bits of grayscale image information for every pixel in the screen image
- Text/Line Art is used for text documents or black-and-white images

#### 4. Select the desired resolution.

Resolution is a measure of how much image detail information the scanner is to capture in a scan. A higher resolution results to a sharper image but requires more disk space for file saving. For this session, set the resolution to 300 dpi.

## Execute the Scan Command

When you are finished with the control settings, click on the **Scan** button. The scanner



begins to scan the document and a message box appears on the screen displaying the progress of the scan.

When the scan is finished, the image will be displayed in the main screen of the host software.



## Using Batch Scan

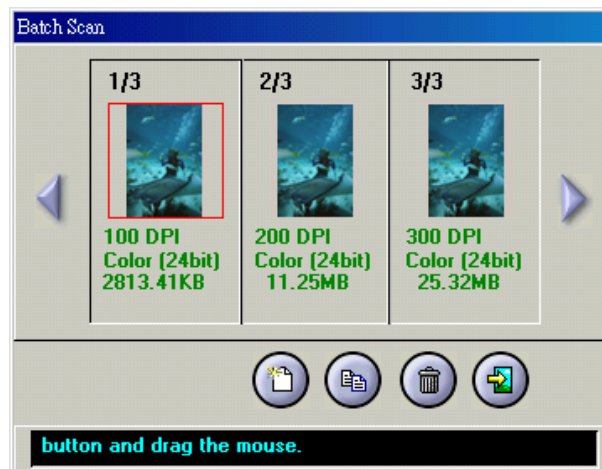
Batch scanning is an easy way to multi-scan any part of your document using different scan modes and resolutions. In batch scanning, you can specify up to a maximum of 30 scan regions, or you can scan a single region several times using different combinations of scan modes and resolutions.



To activate batch scanning, click on the **Batch Scan** button. This will bring up the Batch Scan dialog box.

## The Batch Scan Dialog Box

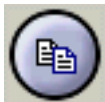
The Batch Scan dialog box contains several controls that make batch scanning simple and easy to use. It will also display the number of batch jobs that you make when you create the scan regions.





- **New Batch Button**

Click on this button to create a new scan region on the image in the Preview Window.



- **Duplicate Batch Button**

Click on this button to duplicate a batch job. You can then specify different control settings for this particular batch job.



- **Trash Batch Button**

Click on this button to delete the selected or highlighted batch job.



- **Cancel Batch Button**

Click on this button to cancel batch scan and exit the Batch Scan dialog box.